

Page 1  
Changed chart(s) since Disc 16-2008  
ADD = Added chart, REV = Revised chart, DEL = Deleted chart.

ACT	PROCEDURE IDENT	INDEX	REV DATE	EFF DATE
-----	-----------------	-------	----------	----------

No revision activity since Disc 16-2008

TERMINAL CHART NOTAMs  
No Chart NOTAMs for Airport URSS

## General Info

Sochi, RUS  
N 43° 26.7' E 39° 56.9' Mag Var: 5.2°E  
Elevation: 89'

Public, IFR, Control Tower, Customs  
Fuel: Jet A-1  
Repairs: Minor Airframe, Minor Engine

Time Zone Info: GMT+3:00 uses DST

## Runway Info

Runway 02-20 7218' x 161' concrete  
Runway 06-24 9482' x 148' concrete

Runway 02 (24.0°M) TDZE 52'

Lights: Edge, ALS

Runway 06 (60.0°M) TDZE 39'

Lights: Edge, ALS

Runway 20 (204.0°M) TDZE 89'

Lights: Edge

Runway 24 (240.0°M) TDZE 85'

Lights: Edge

## Communications Info

ATIS **126.2** Non-English  
Sochi Taxiing Tower **119.0**  
Sochi Start Tower **121.2**  
Sochi Start Tower **118.3**  
Sochi Krug Tower **119.7**  
Sochi Approach Control **124.6** At or below 18700'

## Notebook Info

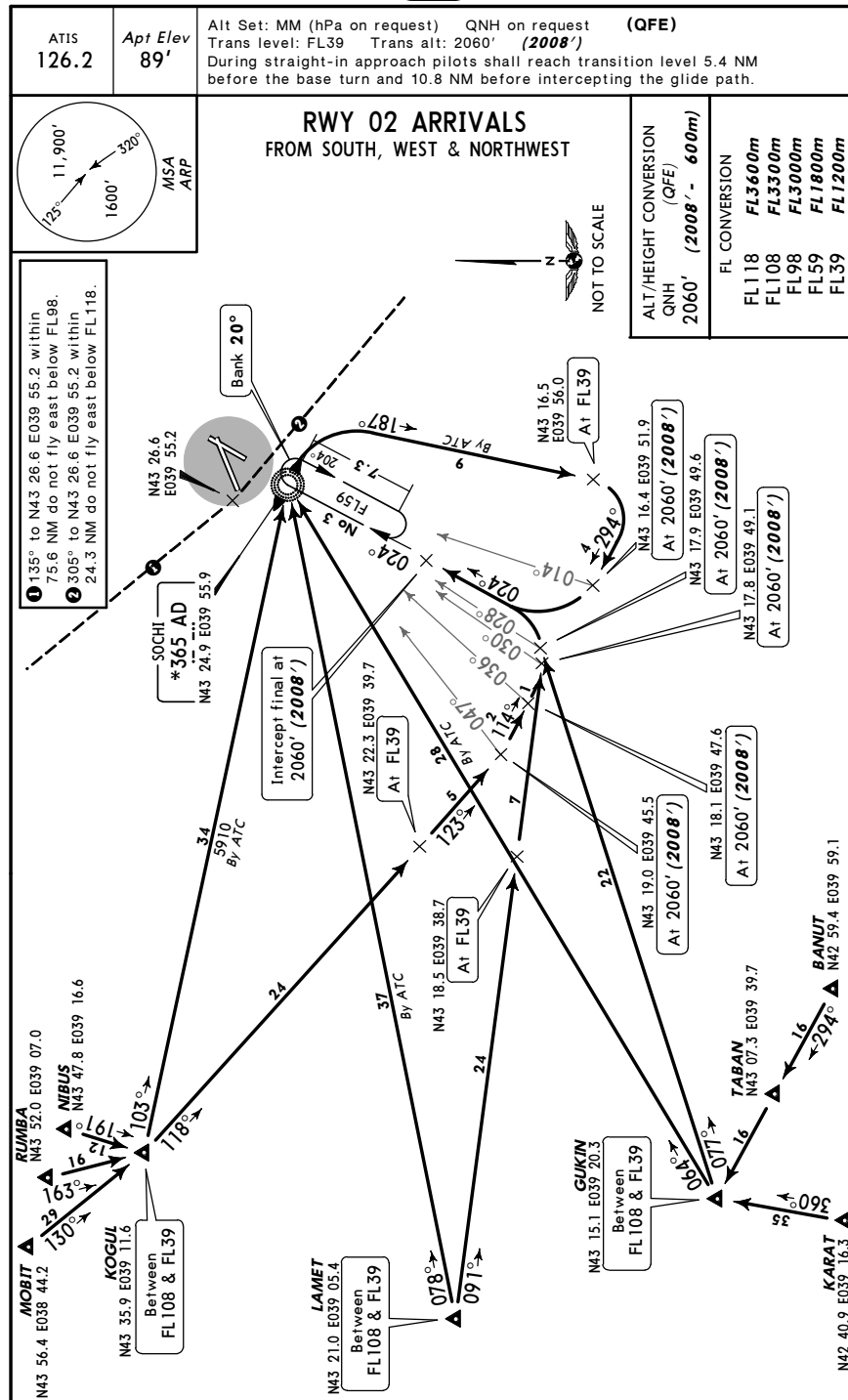


URSS/AER  
SOCHI

**JEPPESEN**  
9 JUN 06 10-2B

**SOCHI, RUSSIA**

**STAR**



**CHANGES:** Routing NIBUS - KOGUL established.

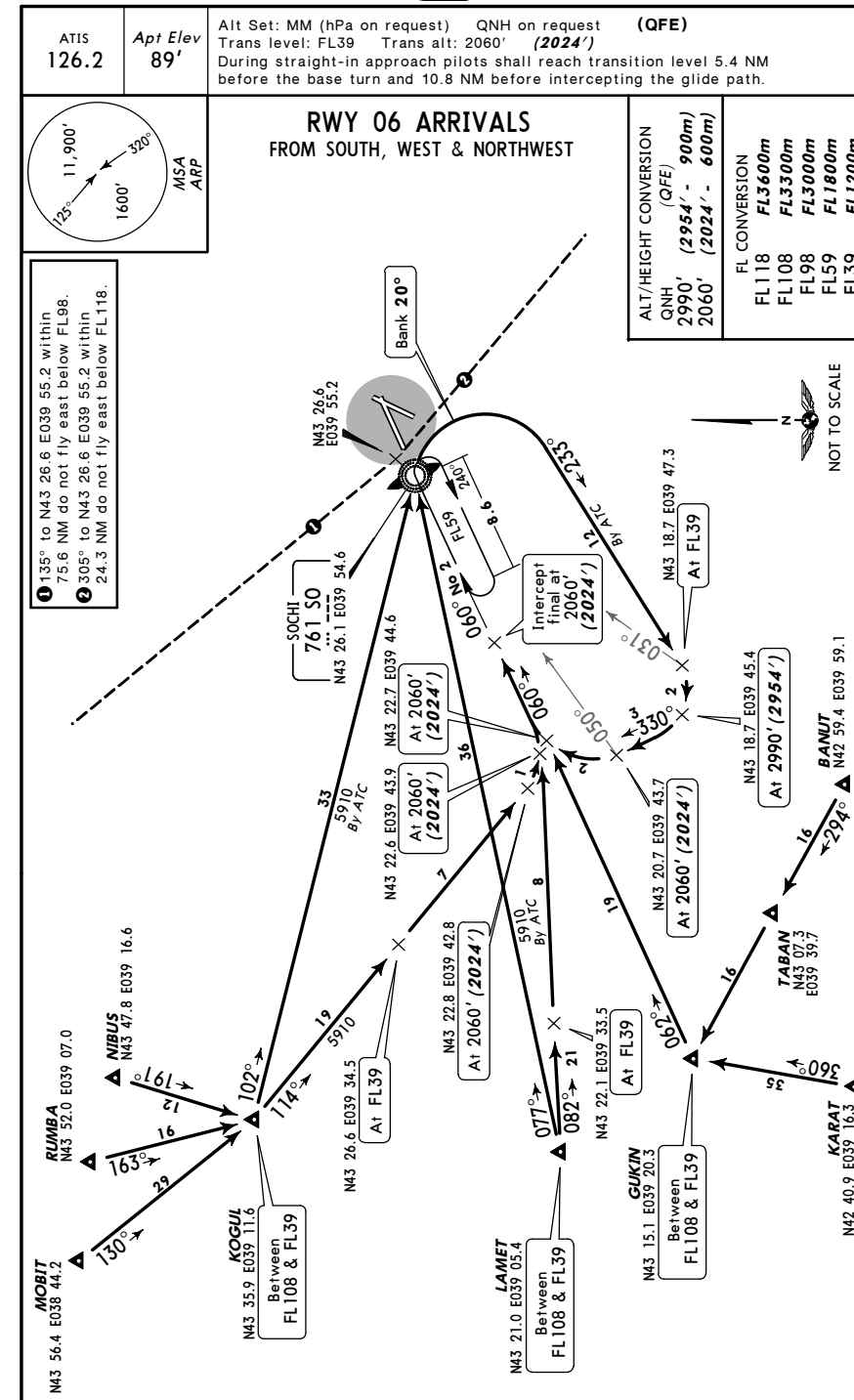
© JEPPESEN SANDERSON, INC., 2004, 2006. ALL RIGHTS RESERVED.

URSS / AER  
SOCHI

**JEPPESEN**  
9 JUN 06 (10-2C)

**SOCHI, RUSSIA**

STAI



**CHANGES:** Routing NIBUS - KOGUL established.

© JEPPESEN SANDERSON, INC., 2004, 2006. ALL RIGHTS RESERVED.

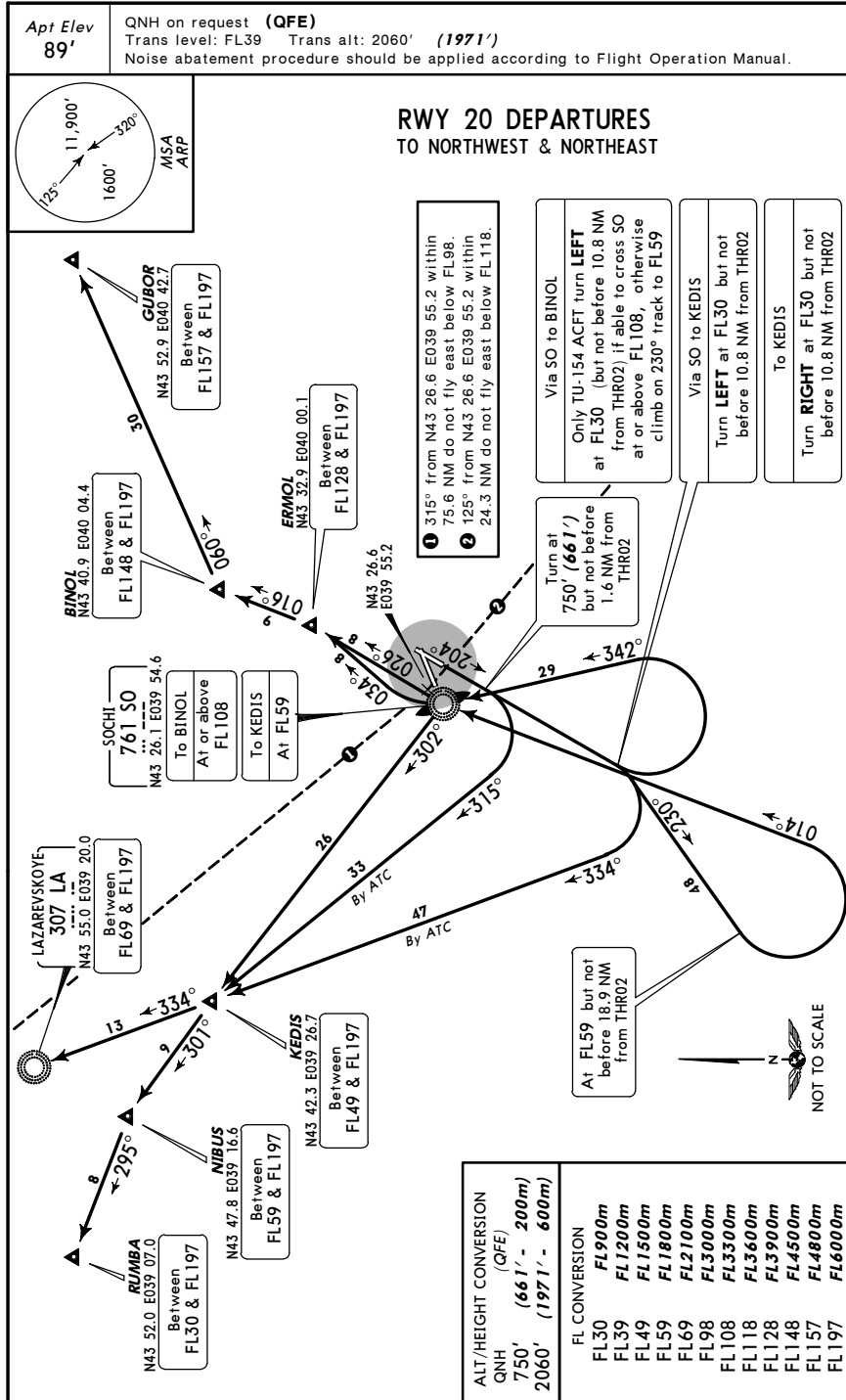
URSS/AER  
SOCHI

JEPPesen

9 JUN 06 10-3

SOCHI, RUSSIA

SID



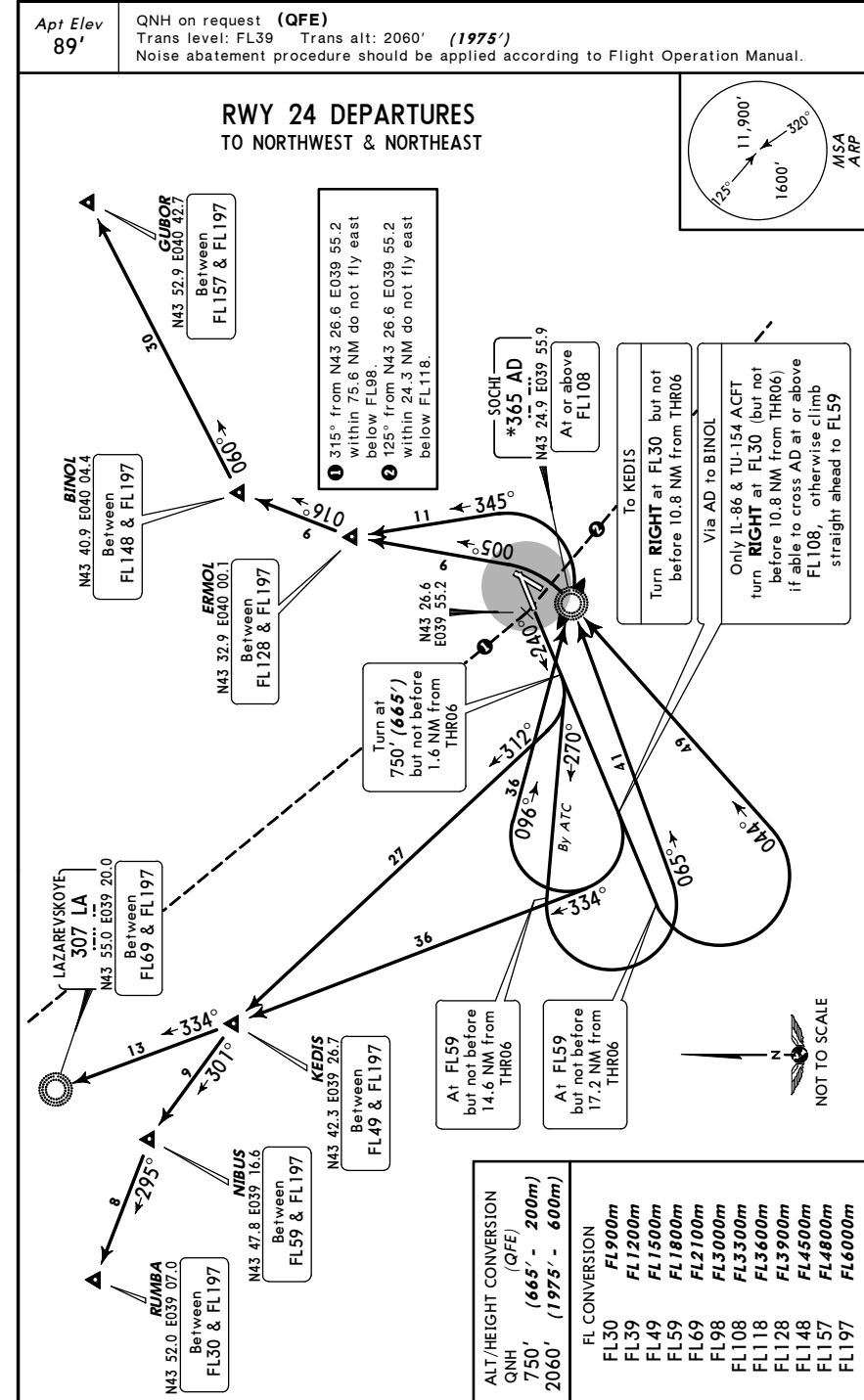
URSS/AER  
SOCHI

JEPPesen

9 JUN 06 10-3A

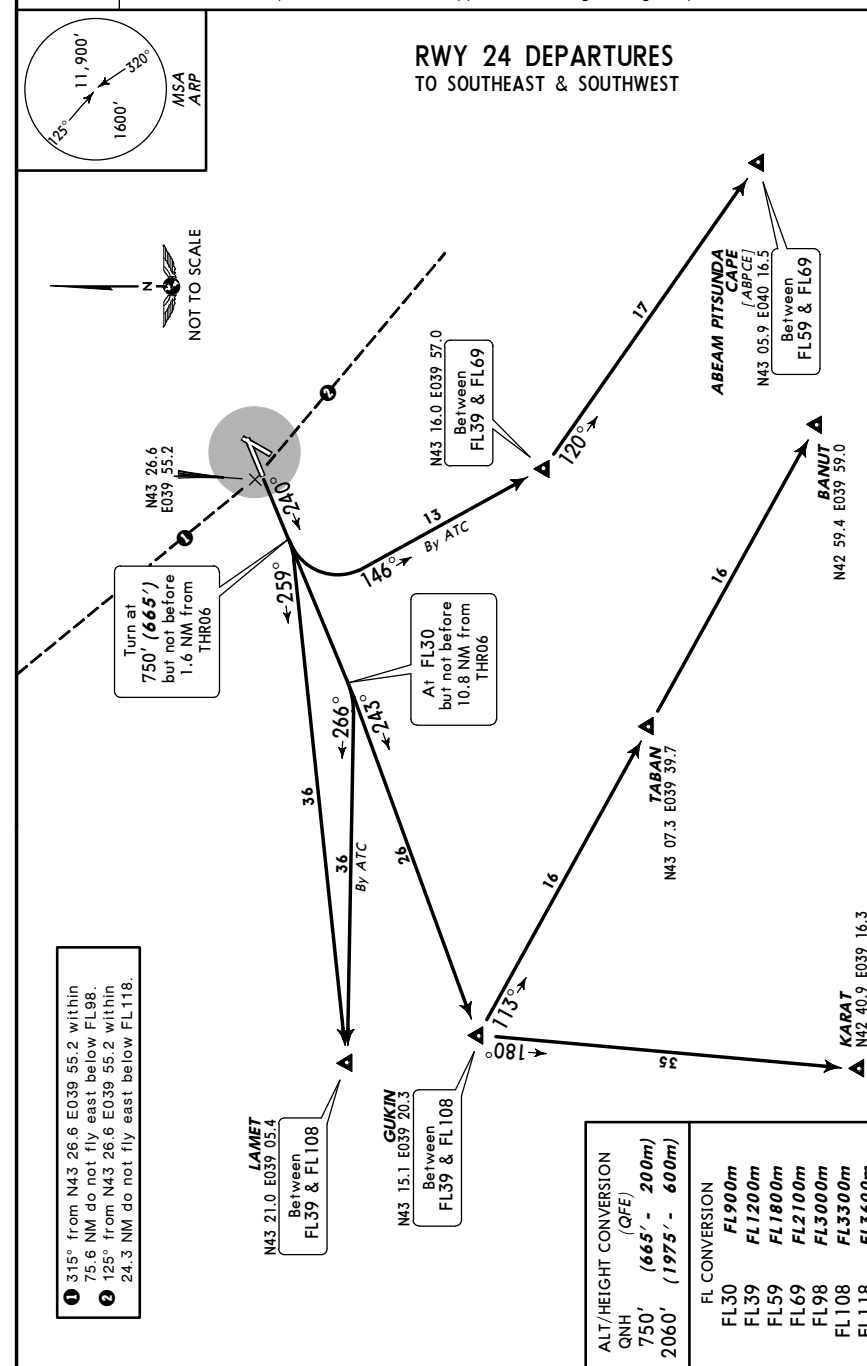
SOCHI, RUSSIA

SID



SOCHI, RUSSIA  
SID

Apt Elev 89'	QNH on request <b>(QFE)</b>
	Trans level: FL39    Trans alt: 2060' <b>(1975')</b>
	Noise abatement procedure should be applied according to Flight Operation Manual.



URSS/AER

Apt Elev **89'**  
N43 26.7 E039 56.9

JEPPesen

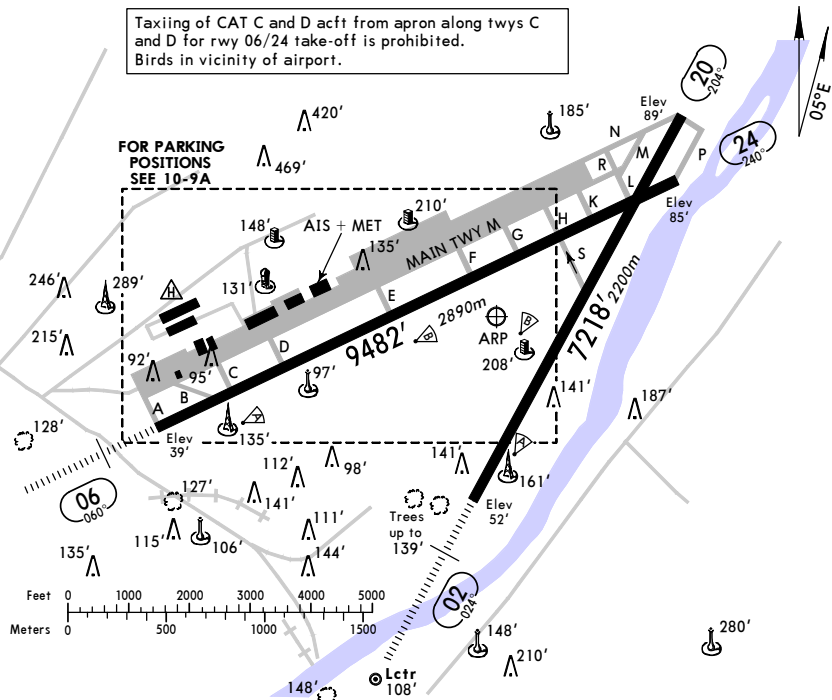
11 JAN 08 (10-9) Eff 17 Jan

SOCHI, RUSSIA

SOCHI

ATIS	SOCHI Taxiing (TWR)	SOCHI Start (TWR)		Tower	
126.2	119.0	Rwy 02/20	Rwy 06/24	Rwy 02/20	Rwy 06/24
		118.3	121.2	118.3	121.2

Taxiing of CAT C and D a/cft from apron along twys C and D for rwy 06/24 take-off is prohibited.  
Birds in vicinity of airport.



ADDITIONAL RUNWAY INFORMATION

RWY	USABLE LENGTHS			TAKE-OFF	WIDTH
	LANDING BEYOND				
	Threshold	Glide Slope			
02	RL (60m) HIALS PAPI-L (angle 2.83°)	RVR	6362' 1939m	NA	161' 49m
20	RL (60m)	RVR	NA	7119' 2170m	
06	RL (60m) HIALS PAPI-L (angle 2.83°)	RVR	9219' 2810m	8123' 2476m	NA
24	RL (60m)	RVR	NA	1	148' 45m

1 TAKE-OFF RUN AVAILABLE

**RWY 24:**  
From rwy head 9482' (2890m)  
twy K int 8202' (2500m)  
twy G int 7218' (2200m)

TAKE-OFF

AIR CARRIER (JAA)  
Rwys 20, 24

LVP must be in force  
RCLM (DAY only)  
or RL

RCLM (DAY only)  
or RL

A		
B	250m	400m
C		
D	300m	

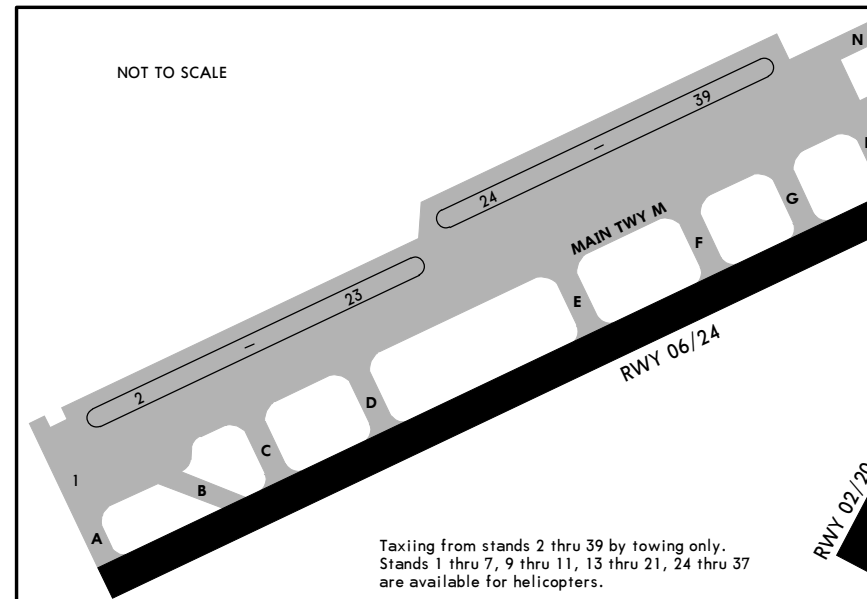
URSS/AER

JEPPesen

11 JAN 08 (10-9A) Eff 17 Jan

SOCHI, RUSSIA

SOCHI



INS COORDINATES

STAND No.	COORDINATES	STAND No.	COORDINATES
1	N43 26.4 E039 55.5	33	N43 26.9 E039 56.8
9 thru 11	N43 26.6 E039 55.9		
12, 13	N43 26.6 E039 56.0		
14, 15	N43 26.7 E039 56.0		
16	N43 26.7 E039 56.1		
17, 18	N43 26.7 E039 56.2		
20A	N43 26.7 E039 56.3		
26	N43 26.8 E039 56.5		
27 thru 30	N43 26.9 E039 56.6		
31, 32	N43 26.9 E039 56.7		

## JAA MINIMUMS

SOCHI, RUSSIA  
SOCHI

**TAKE-OFF RWY 20, 24**

**LVP must be in Force**

RCLM (DAY only) or RL		RCLM (DAY only) or RL	NIL (DAY only)
A	250m	400m	500m
B			
C			
D			

**JEPPESEN**

(11-1)

**SOCHI, RUSSIA**

ILS DME or 2 NDB Rwy 02

**MISSED APCH:** Turn RIGHT onto 204° (MAX 200 KT, mim bank 20°, take-off configuration). Climb with max vertical speed to 2060' (2008'), then according to chart.

Alt Set: MM (hPa on req) QNH on req (QFE) Trans level: FL 39 Trans alt: 2060'(**2008'**)  
 1. It is necessary to maintain the assigned glidepath strictly. 2. Deviation to the RIGHT is prohibited due to piers of transmission line up to 195' at 656'/200m - 1640'/500m from runway centerline. 3. Heavy turbulence with downdrafts to be expected on final. 4. ILS DME reads zero at rwy 02 threshold.

NDB apch: Pass LOM not below 550' (498'), LMM not below 290' (238').

2060' (2008')  
 024°  
 intercept final  
 LOM GS 544' (492')  
 LMM GS 282' (230')  
 0.9  
 0.5  
 TCH 54'  
 RWY 02 52'

<i>Gnd speed-Kts</i>	70	90	100	120	140	160			Refer to Missed Apch above
<i>Ils GS 2.83° or</i>	356	458	509	611	712	814			
<i>NDB Desc Grad 4.9%</i>									

		STRAIGHT-IN LANDING RWY 02					
ILS		LOC (GS out)		NDB			
<i>DA(H)</i> AB: 709'(657') CD: 774'(722')				<i>MDA(H)</i> AB: 710'(658') CD: 780'(728')			
FULL		ALS out				ALS out	
A	3200m		NOT AUTH		3200m		
B							
C							
D	3300m	4100m			3200m	3600m	



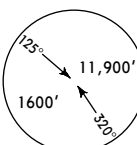
URSS/AER  
 SOCHI

11 JAN 08  
 Eff 17 Jan

JEPPESEN  
 (11-2)

SOCHI, RUSSIA  
 ILS DME or NDB Rwy 06

BRIEFING STRIP

ATIS	SOCHI Approach	SOCHI Tower	SOCHI Krug (TWR)	SOCHI Start (TWR)	SOCHI Taxiing (TWR)
126.2	124.6	121.2	119.7	121.2	119.0
LOC ISO 111.1	Final Apch Crs 060°	GS No Alt published	ILS DA(H) 597' (558')	Apt Elev 89'	
NDB SO 761		Minimum Alt No FAF	NDB MDA(H) Refer to Minimums	RWY 39'	
MISSED APCH: Turn RIGHT onto 240° (MAX 200 KT, mim bank 20°, take-off configuration). Climb with max vertical speed to 2060' (2021'), then according to chart.					

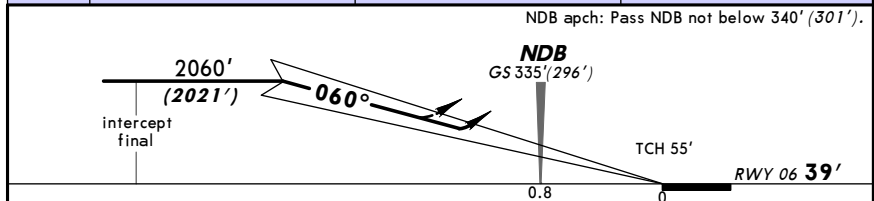
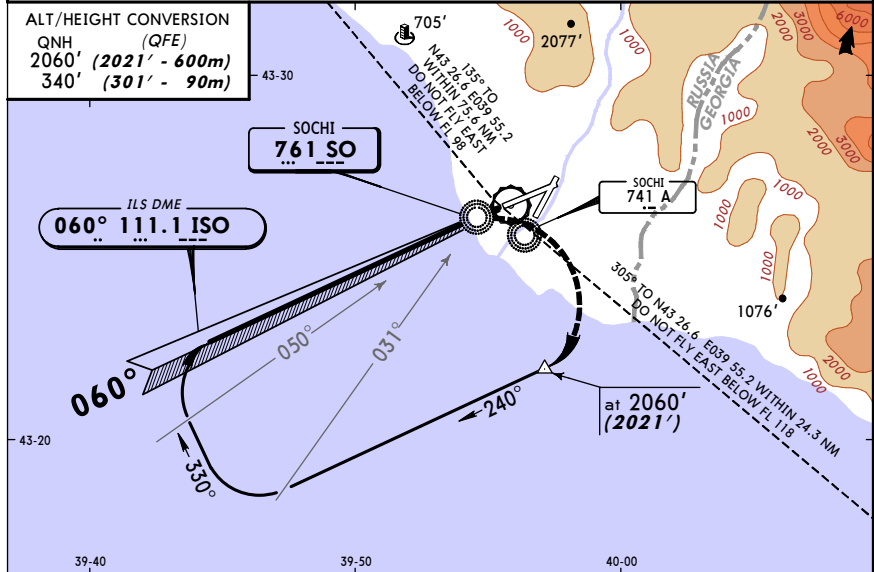
Alt Set: MM (hPa on req)

QNH on req (QFE)

Trans level: FL 39

Trans alt: 2060' (2021')

1. Heavy turbulence with downdrafts to be expected on final. 2. ILS DME reads zero at rwy 06 threshold.



Gnd speed-Kts	70	90	100	120	140	160	HIALS	
ILS GS 2.83° or	356	458	509	611	712	814	PAPI	Refer to Missed Apch above
NDB Desc Grad 4.9%								

STRAIGHT-IN LANDING RWY 06				NDB	
ILS		LOC (GS out)	NDB AB: 930' (891') CD: 1030' (991')		
DA(H) 597' (558')	FULL			ALS out	
A					
B					
C	2300m	3100m	NOT AUTH	3200m	
D				4000m	4800m