

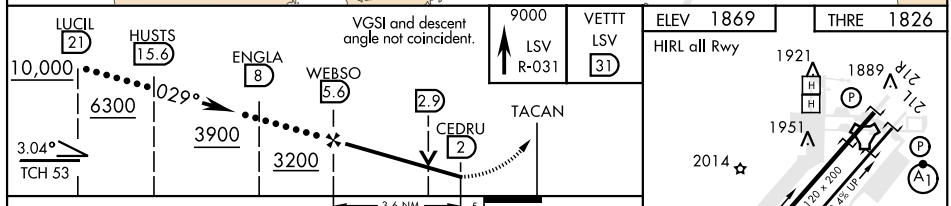
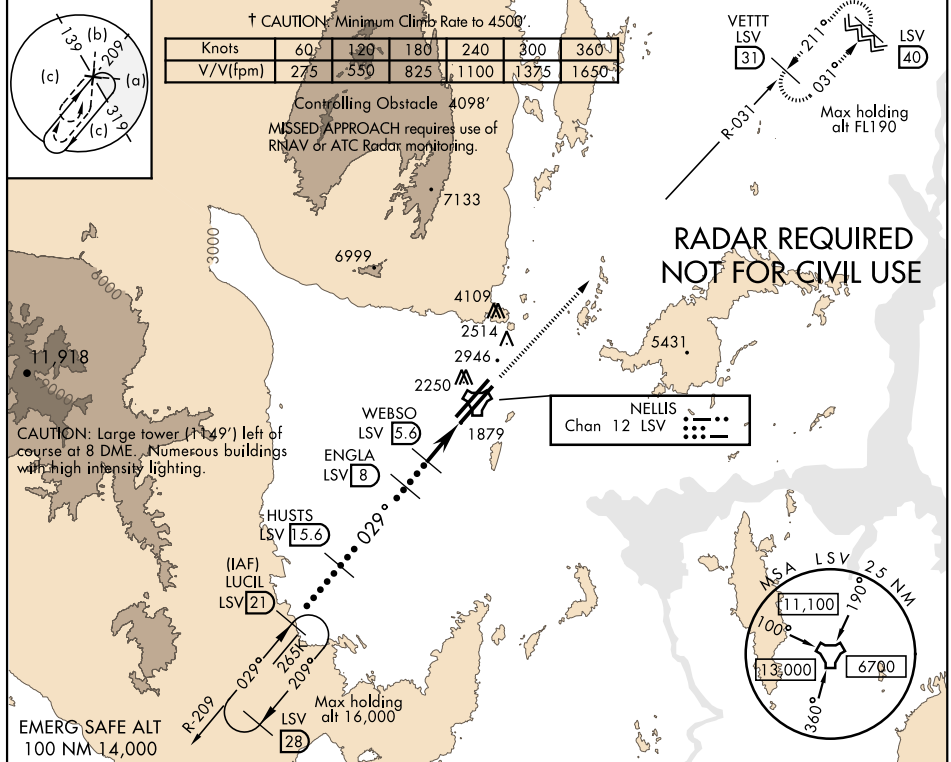
LAS VEGAS, NEVADA

# HI-TACAN RWY 3R

TACAN LSV Chan 12	APCH CRS 029°	Rwy Idg THRE 1826 Arpt Elev 1869	JAL-227 [USAF]	NELLIS AFB (KLSV)
-------------------	---------------	-------------------------------------	----------------	-------------------

ALSF-1  
 † MISSED APPROACH: Climb to 9000 on LSV TACAN R-031 to VETTT and hold, continue climb in hold to 9000.  
 \* When ALS inop, increase CAT CDE vis to 2½ miles.  
 \*\* When ALS inop, increase CAT CDE vis to 1½ miles.  
 \*\*\* Circling not authorized E of Rwy 3R-21L.

ATIS 270.1	NELLIS APP CON 124.95 273.55	NELLIS TOWER 132.55 327.0	GND CON 121.8 275.8	CLNC DEL 120.9 289.4
------------	------------------------------	---------------------------	---------------------	----------------------



CATEGORY	C	D	E
S-3R*	2760-2	934 (900-2)	
CIRCLING***	2760-2¾ 891 (900-2¾)	2860-3 991 (1000-3)	3120-3 1251 (1300-3)
BELOW MINIMA REQUIRES MISSED APPROACH CLIMB GRADIENT			
† S-3R**	2320/50	494 (500-1)	
† CIRCLING***	2680-2½ 811 (900-2½)	2860-3 991 (1000-3)	3120-3 1251 (1300-3)

LAS VEGAS, NEVADA 36°14'N-115°02'W NELLIS AFB (KLSV)

# HI-TACAN RWY 3R

SW-4, 10 DEC 2015 to 07 JAN 2016

SW-4, 10 DEC 2015 to 07 JAN 2016

LAS VEGAS, NEVADA

# HI-TACAN Y RWY 21L

TACAN LSV Chan 12	APCH CRS 210°	Rwy ldg THRE 1865 Arpt Elev 1869
----------------------	------------------	--

JAL-227 [USAF]

NELLIS AFB (KLSV)

\* When ALS inop, increase CAT CDE vis to 1 3/4 miles.  
 \*\* Circling not authorized E of Rwy 3R-21L.



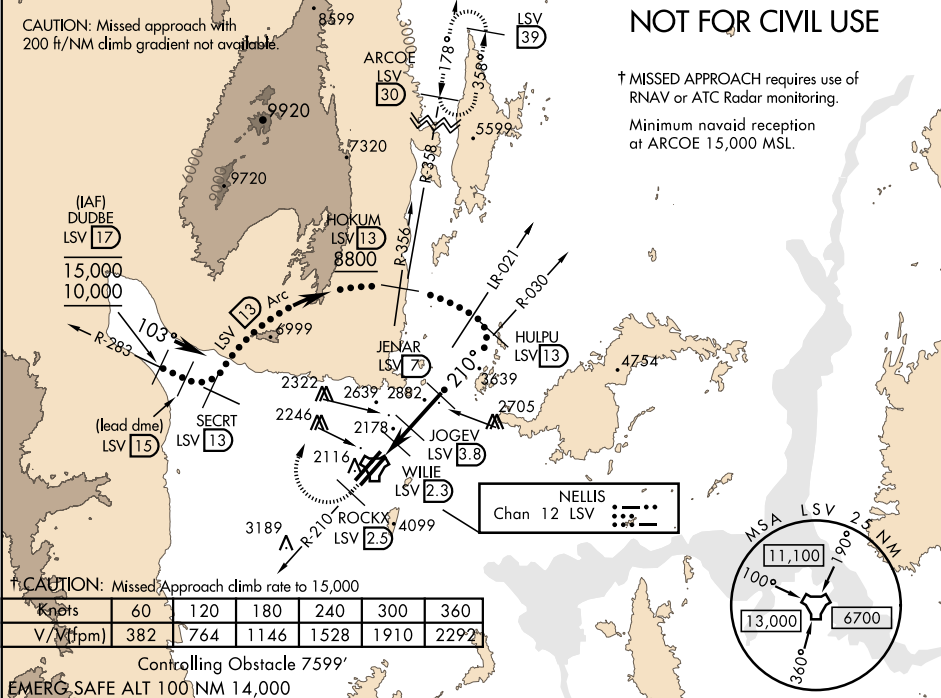
† MISSED APPROACH: Climb to 15,000, intercept LSV TACAN R-210 to 2.5 DME (ROCKX), then climbing right turn heading 020° to join LSV R-358 to ARCOE and hold, continue climb in hold to 15,000.

ATIS 270.1	NELLIS APP CON 124.95 273.55	NELLIS TOWER 132.55 327.0	GND CON 121.8 275.8	CLNC DEL 120.9 289.4
---------------	---------------------------------	------------------------------	------------------------	-------------------------

CAUTION: Missed approach with 200 ft/NM climb gradient not available.

## NOT FOR CIVIL USE

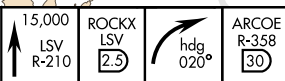
† MISSED APPROACH requires use of RNAV or ATC Radar monitoring.  
 Minimum navaid reception at ARCOE 15,000 MSL.



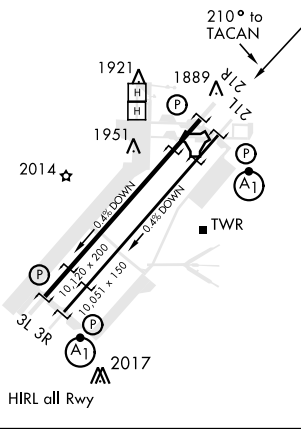
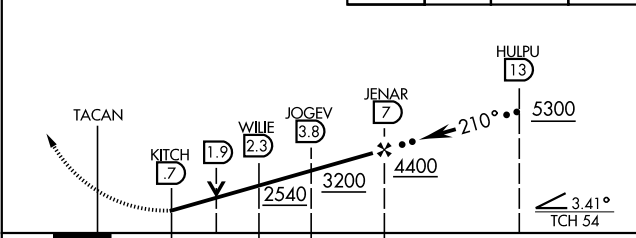
SW-4, 10 DEC 2015 to 07 JAN 2016

SW-4, 10 DEC 2015 to 07 JAN 2016

VGS1 and descent angle not coincident.  
 (VGS1 Angle 3.00/TCH 54.4)



ELEV 1869	THRE 1865
-----------	-----------



CATEGORY	C	D	E
S-21L *	2480-1 3/4	615 (700-1 3/4)	
CIRCLING **	2680-2 1/2 811 (900-2 1/2)	2860-3 991 (1000-3)	3120-3 1251 (1300-3)

LAS VEGAS, NEVADA

36°14'N-115°02'W

NELLIS AFB (KLSV)

Amtd 6 20AUG15

# HI-TACAN Y RWY 21L

LAS VEGAS, NEVADA

# HI-TACAN Z RWY 21L

TACAN LSV Chan 12	APCH CRS 210°	Rwy ldg THRE 10,051 Arprt Elev 1869
-------------------	---------------	--

JAL-227 [USAF]

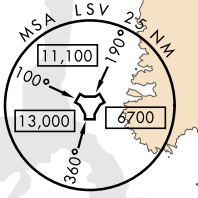
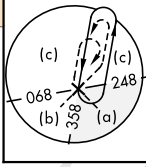
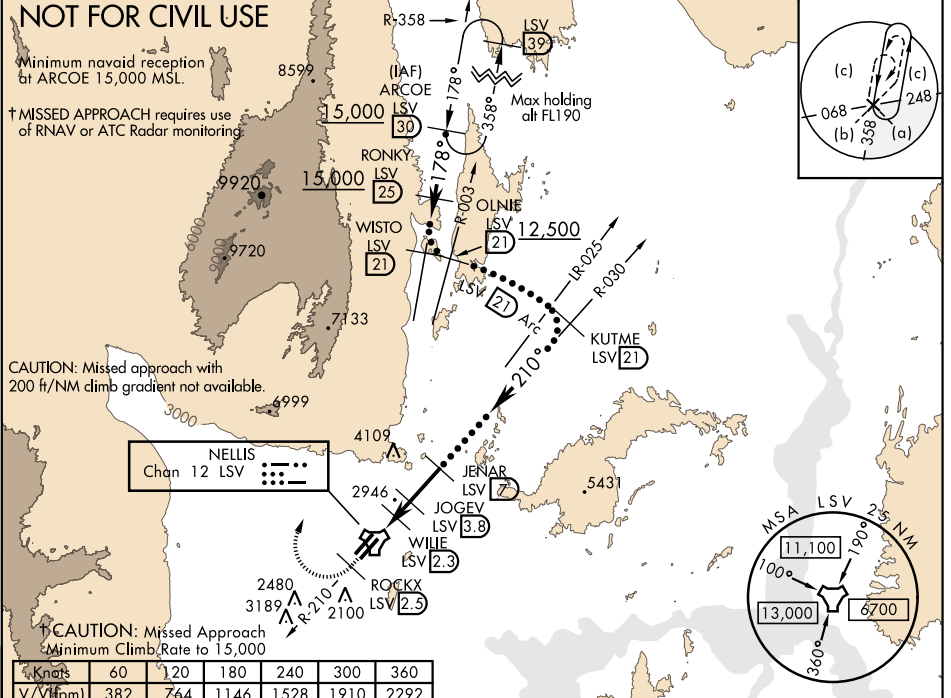
NELLIS AFB (KLSV)

▼\* When ALS inop, increase CAT CDE vis to 1½ miles.  
\*\* Circling not authorized E of Rwy 3R-21L.



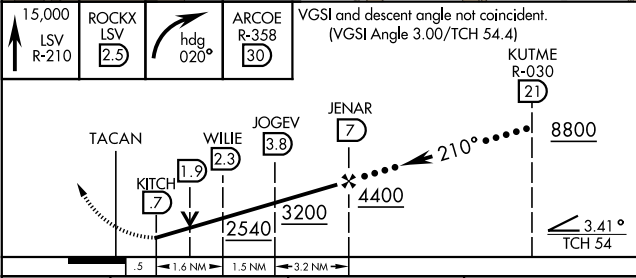
† MISSED APPROACH: Climb to 15,000, intercept LSV TACAN R-210 to 2.5 DME (ROCKX), then climbing right turn heading 020° to join LSV R-358 to ARCOE and hold, continue climb in hold to 15,000.

ATIS 270.1	NELLIS APP CON 124.95 273.55	NELLIS TOWER 132.55 327.0	GND CON 121.8 275.8	CLNC DEL 120.9 289.4
------------	------------------------------	---------------------------	---------------------	----------------------

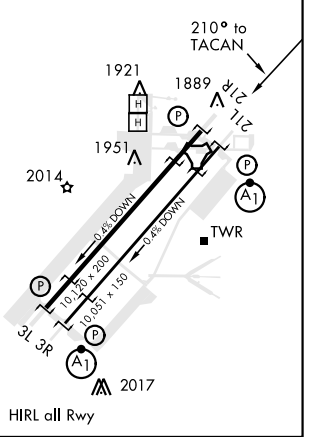


15,000 LSV R-210	ROCKX LSV 2.3	ARCOE R-358 30	hdg 020°
------------------	---------------	----------------	----------

VGSI and descent angle not coincident. (VGSI Angle 3.00/TCH 54.4)



ELEV 1869	THRE 1865
-----------	-----------



CATEGORY	C	D	E
S-21L *	2480-1½	615 (700-1½)	
CIRCLING **	2680-2½ 811 (900-2½)	2860-3 991 (1000-3)	3120-3 1251 (1300-3)

LAS VEGAS, NEVADA

36°14'N-115°02'W

NELLIS AFB (KLSV)

Amdt 6 20AUG15

# HI-TACAN Z RWY 21L

SW-4, 10 DEC 2015 to 07 JAN 2016

SW-4, 10 DEC 2015 to 07 JAN 2016

LAS VEGAS, NEVADA

# TACAN X RWY 21L

TACAN LSV Chan <b>12</b>	APCH CRS <b>210°</b>	Rwy ldg <b>10,051</b> THRE <b>1865</b> Arpt Elev <b>1869</b>
--------------------------	----------------------	--

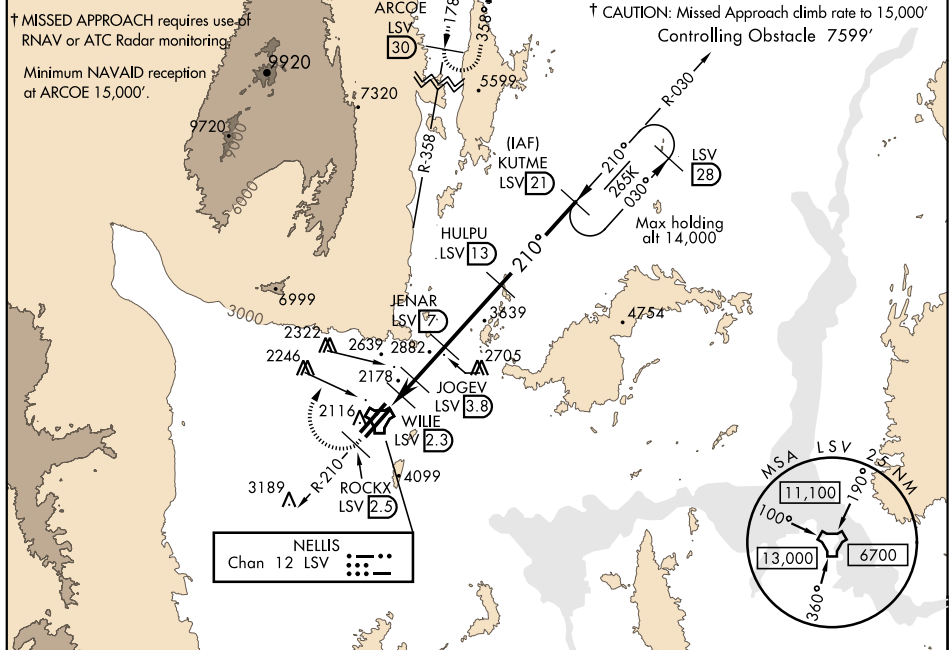
AL-227 [USAF]

NELLIS AFB (KLSV)

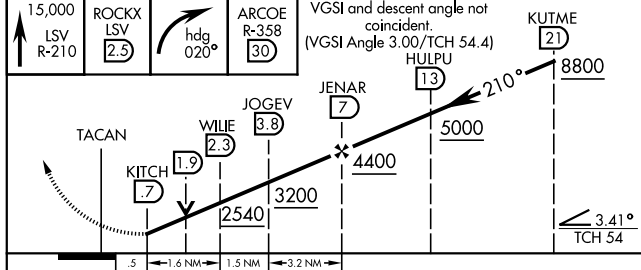
▼ \* When ALS inop, increase CAT AB RVR to 55, vis to 1 mile, CAT CDE vis to 1 3/4 miles.  
 \*\* Circling not authorized E of Rwy 3R-21L.  
 † MISSED APPROACH: Climb to 15,000, intercept LSV TACAN R-210 to 2.5 DME (ROCKX), then climbing right turn heading 020° to join LSV R-358 to ARCOE and hold, continue climb in hold to 15,000.

ATIS <b>270.1</b>	NELLIS APP CON <b>124.95 273.55</b>	NELLIS TOWER <b>132.55 327.0</b>	GND CON <b>121.8 275.8</b>	CLNC DEL <b>120.9 289.4</b>
-------------------	-------------------------------------	----------------------------------	----------------------------	-----------------------------

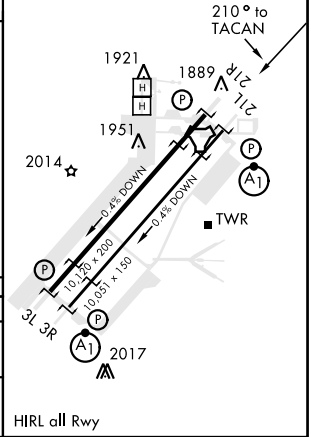
CAUTION: Missed approach with 200 ft/NM climb gradient not available.	<table border="1"> <tr> <td>Knots</td> <td>60</td> <td>120</td> <td>180</td> <td>240</td> </tr> <tr> <td>V/V(fpm)</td> <td>382</td> <td>764</td> <td>1146</td> <td>1528</td> </tr> </table>	Knots	60	120	180	240	V/V(fpm)	382	764	1146	1528
Knots	60	120	180	240							
V/V(fpm)	382	764	1146	1528							



**NOT FOR CIVIL USE**  
EMERG SAFE ALT 100 NM 14,000



ELEV 1869	THRE 1865
-----------	-----------



CATEGORY	A	B	C	D	E
S-21L *	2480/24	615 (700-1/2)	2480-1 3/8	615 (700-1 3/8)	
CIRCLING **	2480-1 611 (700-1)	2680-1 1/4 811 (900-1 1/4)	2680-2 1/2 811 (900-2 1/2)	2860-3 991 (1000-3)	3120-3 1251 (1300-3)

LAS VEGAS, NEVADA  
Amdt 6 20AUG15

36°14'N-115°02'W

NELLIS AFB (KLSV)

# TACAN X RWY 21L

SW-4, 10 DEC 2015 to 07 JAN 2016

SW-4, 10 DEC 2015 to 07 JAN 2016