

LAS VEGAS, NEVADA

HI-ILS or LOC/DME Z RWY 21L

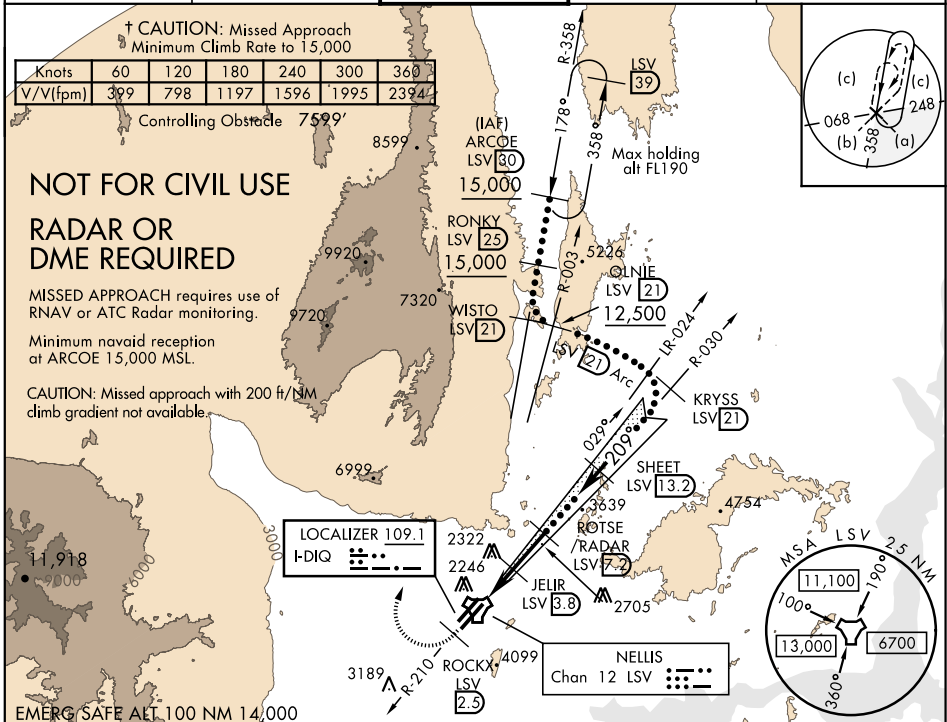
LOC I-DIQ 109.1	APCH CRS 209°	Rwy Idg THRE 1865 Arprt Elev 1869	JAL-227 [USAF]	NELLIS AFB (KLSV)
---------------------------	-------------------------	---	----------------	-------------------

▼ * When ALS inop, increase CAT CDE RVR to 40, vis to ¾ mile.
 ** When ALS inop, increase CAT CDE vis to 1½ miles.
 *** Circling not authorized E of Rwy 3R-21L.

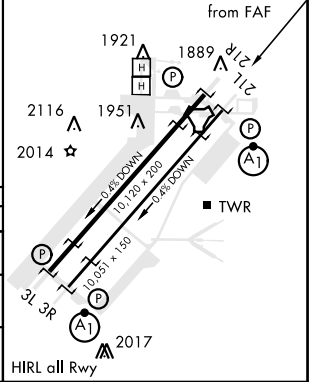
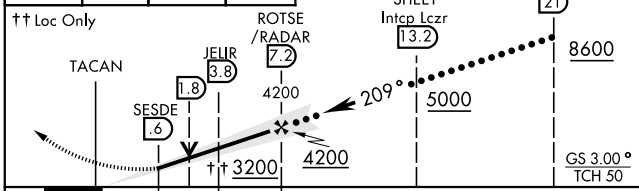
ALSF-1
 (A1)

† MISSED APPROACH: Climb to 15,000, intercept LSV TACAN R-210 to 2.5 DME (ROCKX), then climbing right turn heading 020° to join LSV R-358 to ARCOE and hold, continue climb-in-hold to 15,000.

ATIS 270.1	NELLIS APP CON 124.95 273.55	NELLIS TOWER 132.55 327.0	GND CON 121.8 275.8	CLNC DEL 120.9 289.4
----------------------	--	-------------------------------------	-------------------------------	--------------------------------



15,000 LSV R-210	ROCKX LSV 2.5	ARCOE R-358 30	The difference between the VGSI TCH (54 ft) and the procedure TCH (50 ft) is greater than 3 ft.	KRYSS R-030 21	ELEV 1869	THRE 1865
------------------	---------------	----------------	---	----------------	-----------	-----------



CATEGORY	C	D	E
S-ILS 21L*	2065/24	200 (200-½)	
S-LOC 21L**	2440-1¼	575 (600-1¼)	
CIRCLING ***	2680-2½ 811 (900-2½)	2860-3 991 (1000-3)	3120-3 1251 (1300-3)

LAS VEGAS, NEVADA 36°14'N-115°02'W NELLIS AFB (KLSV)

HI-ILS or LOC/DME Z RWY 21L

SW-4, 10 DEC 2015 to 07 JAN 2016

SW-4, 10 DEC 2015 to 07 JAN 2016

LAS VEGAS, NEVADA

ILS or LOC/DME X RWY 21L

LOC I-DIQ 109.1	APCH CRS 209°	Rwy Idg 10,051 THRE 1865 Arpt Elev 1869	AL-227 [USAF]	NELLIS AFB (KLSV)
---------------------------	-------------------------	---	---------------	-------------------

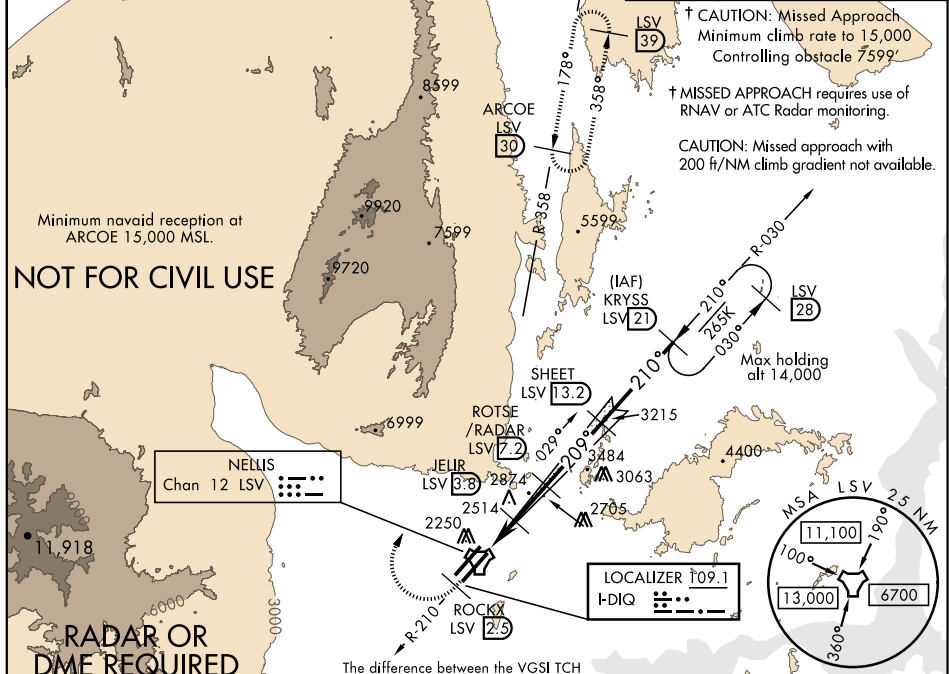
▼ * When ALS inop, increase all CAT RVR to 40, vis to ¼ mile.
 ** When ALS inop, increase CAT AB RVR to 55, vis to 1 mile, CAT CDE vis to 1½ miles.

ALS-F1

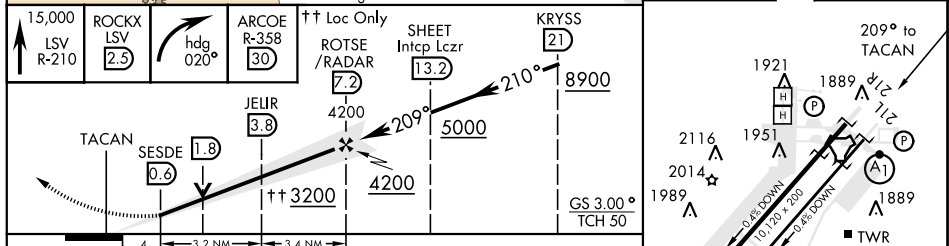
† MISSED APPROACH: Climb to 15,000, intercept LSV TACAN R-210 to 2.5 DME (ROCKX), then climbing right turn heading 020° to join LSV R-358 to ARCOE and hold, continue climb in hold to 15,000.

ATIS 270.1	NELLIS APP CON 124.95 273.55	NELLIS TOWER 132.55 327.0	GND CON 121.8 275.8	CLNC DEL 120.9 289.4
----------------------	--	-------------------------------------	-------------------------------	--------------------------------

*** Circling not authorized E of Rwy 3R-21L.	Knobs	60	120	180	240
	V/V(fpm)	399	798	1197	1596



ELEV 1869	THRE 1865
-----------	-----------



CATEGORY	A	B	C	D	E
S-ILS 21L *	2065/24		200	(200-½)	
S-LOC 21L **	2440/24 575 (600-½)		2440-1¼ 575 (600-1¼)		
CIRCLING ***	2480-1 611 (700-1)	2680-1¼ 811 (900-1¼)	2680-2½ 811 (900-2½)	2860-3 991 (1000-3)	3120-3 1251 (1300-3)

HIRL all Rwy

LAS VEGAS, NEVADA 36°14'N-115°02'W NELLIS AFB (KLSV)

Amdt 6 20AUG15

ILS or LOC/DME X RWY 21L

SW-4, 10 DEC 2015 to 07 JAN 2016

SW-4, 10 DEC 2015 to 07 JAN 2016

LAS VEGAS, NEVADA

LOC/DME Y RWY 21L

LOC I-DIQ 109.1	APCH CRS 209°	Rwy ldg THRE 1865 Arpt Elev 1869
---------------------------	-------------------------	--

AL-227 [USAF]

NELLIS AFB (KLSV)

* When ALS inop, increase CAT CDE vis to 1 1/2 miles.
 ** Circling not authorized E of Rwy 3R-21L.



† MISSED APPROACH: Climb to 8000, intercept the LAS VORTAC R-018 to 10.3 DME (IREEN), then to LAS and hold, continue climb in hold to 8000.

ATIS 270.1	NELLIS APP CON 124.95 273.55	NELLIS TOWER 132.55 327.0	GND CON 121.8 275.8	CLNC DEL 120.9 289.4
----------------------	--	-------------------------------------	-------------------------------	--------------------------------

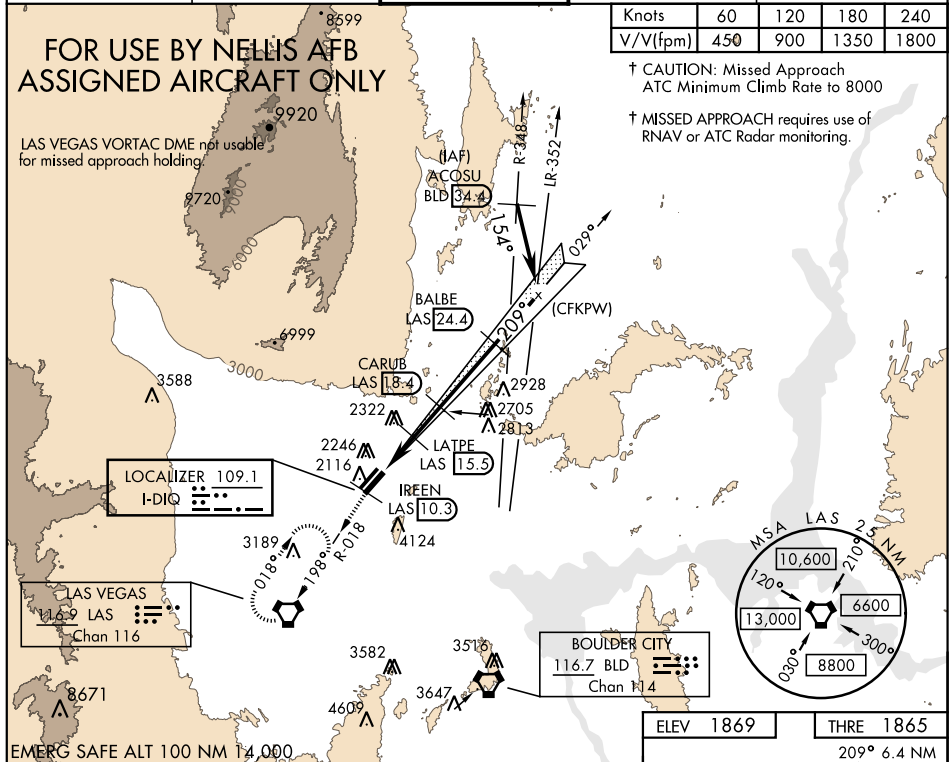
Knots	60	120	180	240
V/V(fpm)	450	900	1350	1800

† CAUTION: Missed Approach
 ATC Minimum Climb Rate to 8000

† MISSED APPROACH requires use of
 RNAV or ATC Radar monitoring.

**FOR USE BY NELLIS AFB
ASSIGNED AIRCRAFT ONLY**

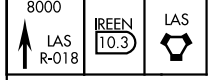
LAS VEGAS VORTAC DME not usable for missed approach holding



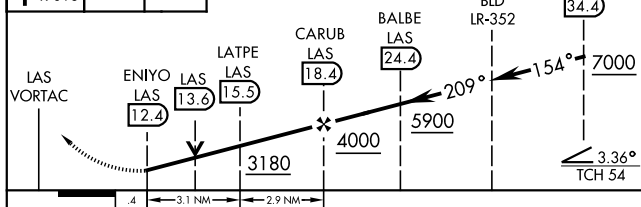
SW-4, 10 DEC 2015 to 07 JAN 2016

SW-4, 10 DEC 2015 to 07 JAN 2016

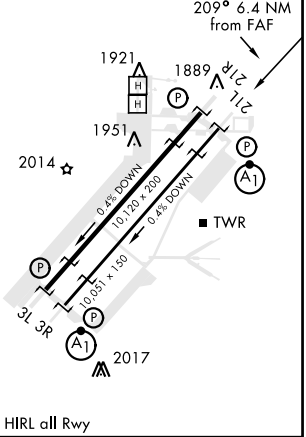
EMERG SAFE ALT 100 NM 14,000



VGSi and descent angle not coincident.
(VGSi Angle 3.00/TCH 54.4)



ELEV 1869	THRE 1865
-----------	-----------



CATEGORY	C			D		E
S-LOC 21L *	2440-1 1/4 575 (600-1 1/4)					
CIRCLING **	2680-2 1/2 811 (900-2 1/2)	2860-3 991 (1000-3)	3120-3 1251 (1300-3)			

LAS VEGAS, NEVADA
Amdt 4 20AUG15

36°14'N-115°02'W

NELLIS AFB (KLSV)

LOC/DME Y RWY 21L