

Amdt 4 15176

DREAM FOUR DEPARTURE (DREAM4 • DREAM)

ATIS 270.1
CLNC DEL
120.9 289.4
GND CON
121.8 275.8
NELLIS TOWER
132.55 327.0
NELLIS DEP CON
135.1 385.4

SHL-227 [USAF]

Rwy	Knots	60	120	180	240	300	360
* 3 L (a)	V/V(fpm)	269	538	807	1076	1345	1614
* 3 R (b)	V/V(fpm)	245	490	735	980	1225	1470
† 3 L (c)	V/V(fpm)	498	996	1494	1992	2490	2988
† 3 R (c)	V/V(fpm)	496	992	1488	1984	2480	2976
* 21 L (d)	V/V(fpm)	389	778	1167	1556	1945	2334
* 21 R (d)	V/V(fpm)	395	790	1185	1580	1975	2370
† 21 L (c)	V/V(fpm)	453	906	1359	1812	2265	2718
† 21 R (c)	V/V(fpm)	457	914	1371	1828	2285	2742

NOT FOR CIVIL USE

* Minimum † ATC Climb Rate

(a) to 3600
(b) to 3100
(c) to 17,000
(d) to 8500

SW-4, 10 DEC 2015 to 07 JAN 2016

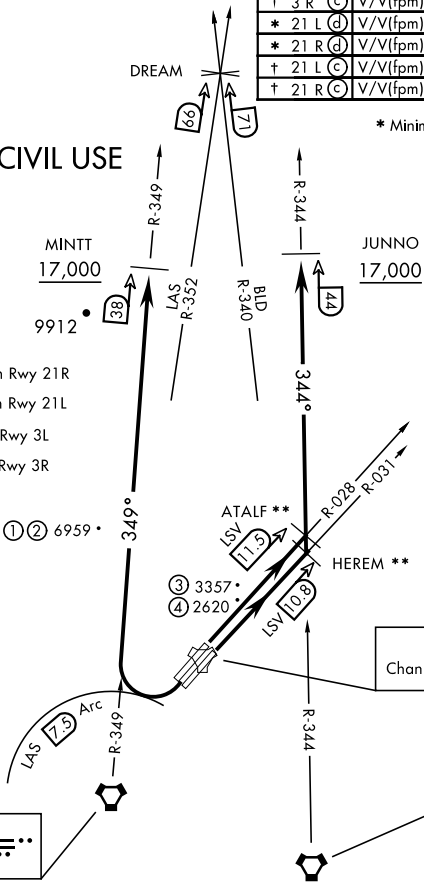
- ① 12.24 NM from Rwy 21R
- ② 12.40 NM from Rwy 21L
- ③ 5.67 NM from Rwy 3L
- ④ 5.85 NM from Rwy 3R

CAUTION: If unable to comply with restrictions advise ATC prior to departure.

** Lead DME:
ATALF - LSV 9.5
HEREM - LSV 8.8

LAS VEGAS
116.9 LAS
Chan 116

BOULDER CITY
116.7 BLD
Chan 114



DEPARTURE ROUTE DESCRIPTION

TAKE-OFF RWY 3L: Fly runway heading to intercept the LSV TACAN R-028 then direct ATALF, intercept the BLD VORTAC R-344 then direct JUNNO, cross JUNNO at or above 17,000, then via assigned route.

TAKE-OFF RWY 3R: Fly runway heading to intercept the LSV TACAN R-031 then direct HEREM, intercept the BLD VORTAC R-344 then direct JUNNO, cross JUNNO at or above 17,000, then via assigned route.

TAKE-OFF RWY 21L/R: Turn right to intercept LAS VORTAC R-349 outbound. Remain North of LAS 7.5 DME turning Northbound. Intercept LAS R-349 between 5000 and 6000, do not proceed West of LAS R-349. Cross MINTT at above 17,000, then via assigned route.

NOISE ABATEMENT PROCEDURES: Fly IAW Nellis Noise Abatement instructions published in AP/1.

DREAM FOUR DEPARTURE (DREAM4 • DREAM)

SW-4, 10 DEC 2015 to 07 JAN 2016

Amdt 3 15176

FYTR THREE DEPARTURE (FYTR3 • FYTR)

Rwy	Knots	60	120	180	240	300	360
3L (A)	V/V(fpm)	400	800	1200	1600	2000	2400
3R (A)	V/V(fpm)	395	790	1185	1580	1975	2370
21L/R (B)	V/V(fpm)	390	780	1170	1560	1950	2340

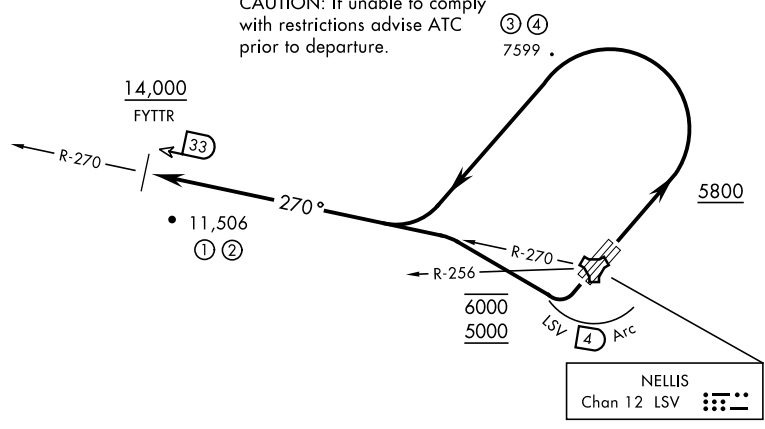
ATIS 270.1
 CLNC DEL 120.9 289.4
 GND CON 121.8 275.8
 NELLIS TOWER 132.55 327.0
 NELLIS CONTROL 119.35 254.4
 NELLIS DEP CON 135.1 385.4

Minimum Climb Rate
 (A) to 9600
 (B) to 13,500

RADAR REQUIRED ABOVE FL190 RADAR REQUIRED FOR RWY 3L/R DEPARTURES

- ① 29.81 NM from Rwy 21L
- ② 29.67 NM from Rwy 21R
- ③ 15.43 NM from Rwy 3L
- ④ 15.57 NM from Rwy 3R

CAUTION: If unable to comply with restrictions advise ATC prior to departure.



DEPARTURE ROUTE DESCRIPTION

TAKE-OFF RWY 3L/R: Fly runway heading until reaching 5800, then climbing left turn to intercept LSV TACAN R-270 outbound. Cross FYTR at or above 14,000 or as assigned, then via assigned route.

TAKE-OFF RWY 21L/R: Turn right to intercept LSV TACAN R-270 outbound, remain within LSV 4 DME until joining LSV R-270, cross LSV R-256 between 5000 and 6000. Cross FYTR at or above 14,000 or as assigned, then via assigned route.

NOISE ABATEMENT PROCEDURES: Fly IAW Nellis Noise Abatement instructions published in AP/1.

SW-4, 10 DEC 2015 to 07 JAN 2016

SW-4, 10 DEC 2015 to 07 JAN 2016

Amdt 4 15176

MORMON MESA FOUR DEPARTURE (MMM4 • MMM)

SHL-227 [USAF]

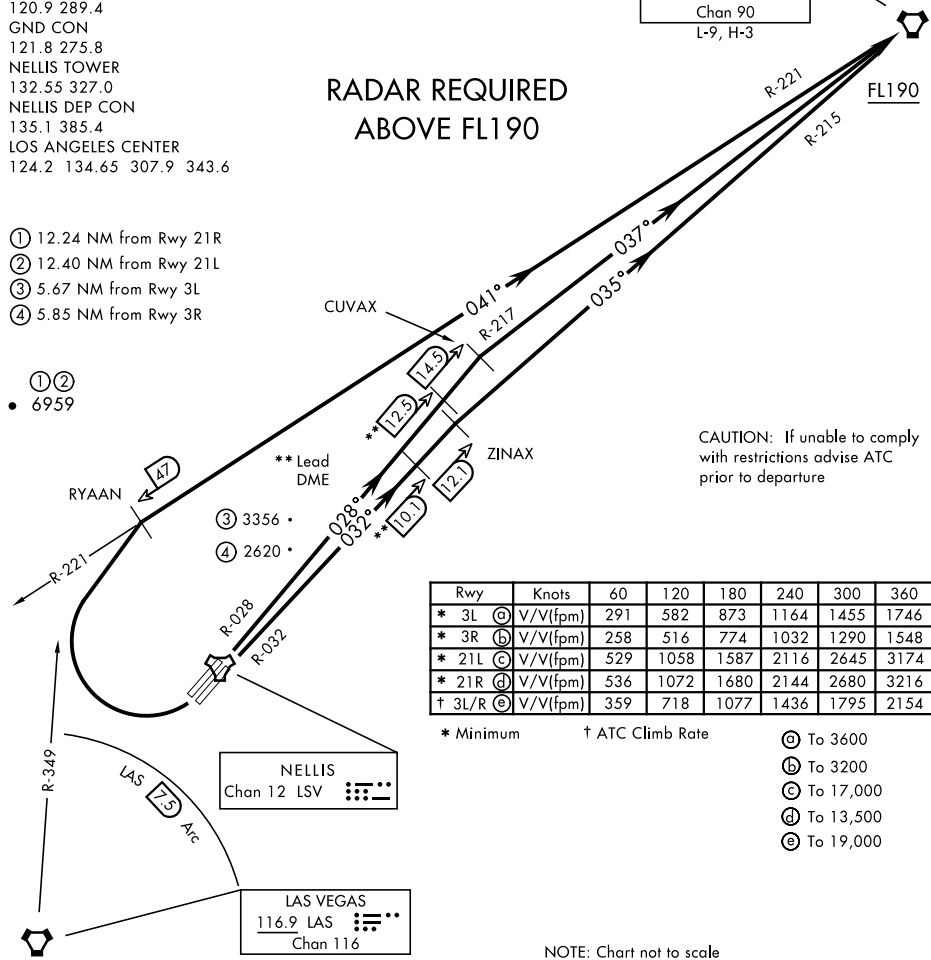
ATIS 270.1
 CLINC DEL 120.9 289.4
 GND CON 121.8 275.8
 NELLIS TOWER 132.55 327.0
 NELLIS DEP CON 135.1 385.4
 LOS ANGELES CENTER 124.2 134.65 307.9 343.6

MORMON MESA
 114.3 MMM
 Chan 90
 L-9, H-3

RADAR REQUIRED ABOVE FL190

- ① 12.24 NM from Rwy 21R
- ② 12.40 NM from Rwy 21L
- ③ 5.67 NM from Rwy 3L
- ④ 5.85 NM from Rwy 3R

- ① ② • 6959



CAUTION: If unable to comply with restrictions advise ATC prior to departure

Rwy	Knots	60	120	180	240	300	360
* 3L (a)	V/V(fpm)	291	582	873	1164	1455	1746
* 3R (b)	V/V(fpm)	258	516	774	1032	1290	1548
* 21L (c)	V/V(fpm)	529	1058	1587	2116	2645	3174
* 21R (d)	V/V(fpm)	536	1072	1680	2144	2680	3216
† 3L/R (e)	V/V(fpm)	359	718	1077	1436	1795	2154

* Minimum † ATC Climb Rate
 (a) To 3600
 (b) To 3200
 (c) To 17,000
 (d) To 13,500
 (e) To 19,000

NOTE: Chart not to scale

DEPARTURE ROUTE DESCRIPTION

TAKE-OFF RWY 3L: Fly runway heading to intercept LSV TACAN R-028 then direct CUVAX, intercept the MMM VORTAC R-217 then direct MMM climbing to FL190 or as assigned, then via assigned route.

TAKE-OFF RWY 3R: Fly runway heading to intercept LSV TACAN R-032 then direct ZINAX, intercept the MMM VORTAC R-215 then direct MMM climbing to FL190 or as assigned, then via assigned route.

TAKE-OFF RWY 21L/R: Turn right to intercept MMM VORTAC R-221 prior to MMM 47 DME, remain North of the LAS VORTAC 7.5 DME, remain East of LAS R-349, intercept MMM R-221 then direct MMM, cross MMM at or above FL190 then via assigned route.

NOISE ABATEMENT PROCEDURES: Fly IAW Nellis Noise Abatement instructions published in AP/1.

MORMON MESA FOUR DEPARTURE (MMM4 • MMM)

LAS VEGAS, NEVADA
 NELLIS AFB (KLSV)

SW-4, 10 DEC 2015 to 07 JAN 2016

SW-4, 10 DEC 2015 to 07 JAN 2016