

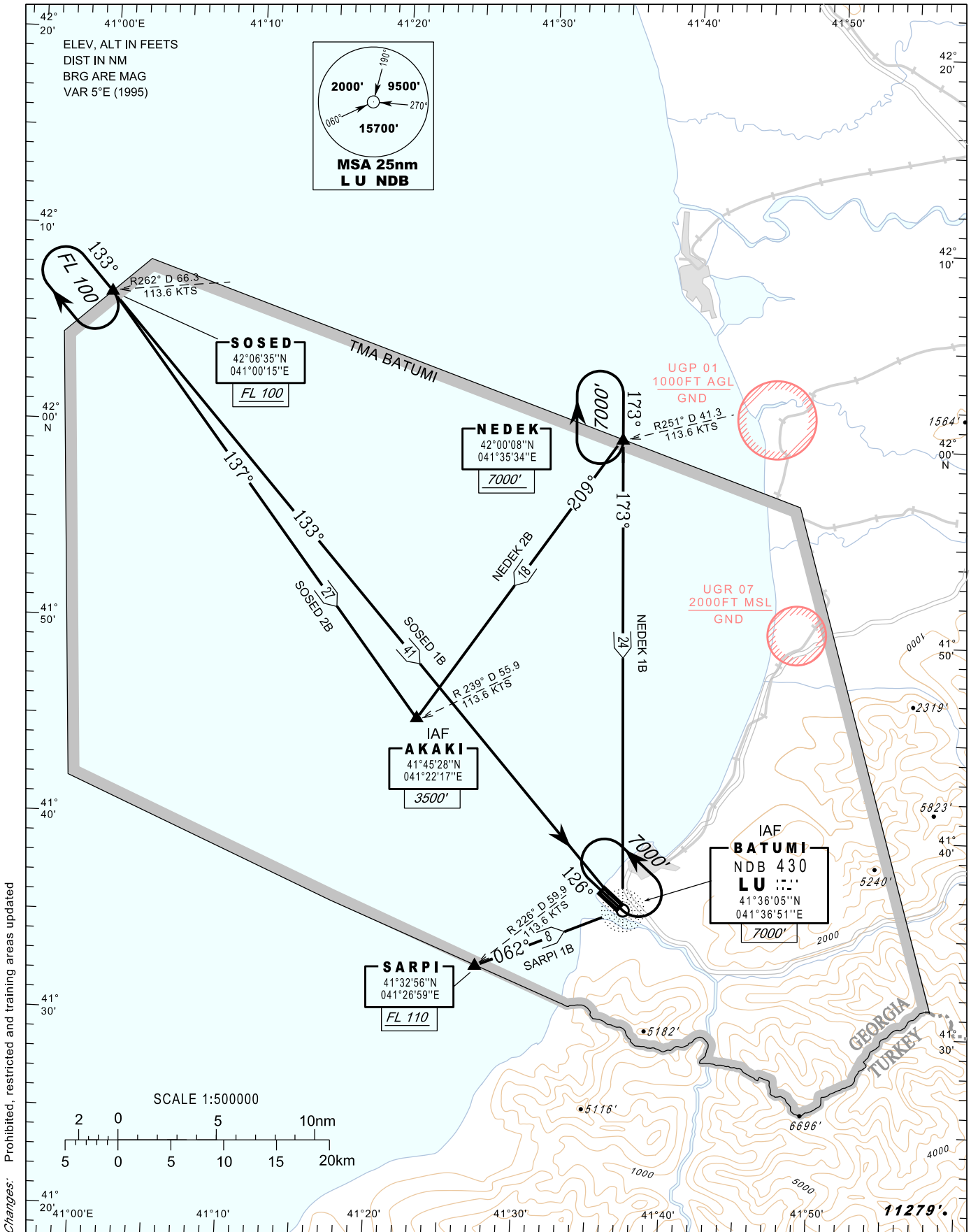
# STANDARD ARRIVAL CHART- INSTRUMENT (STAR) - ICAO

TRANSITION LEVEL FL 90  
TRANSITION ALTITUDE 7000'

APP 124.425  
TWR 118.600

## BATUMI (UGSB) RWY 13

SOSED 1B, SOSED 2B, SARPI 1B  
NEDEK 1B, NEDEK 2B



Changes: Prohibited, restricted and training areas updated