

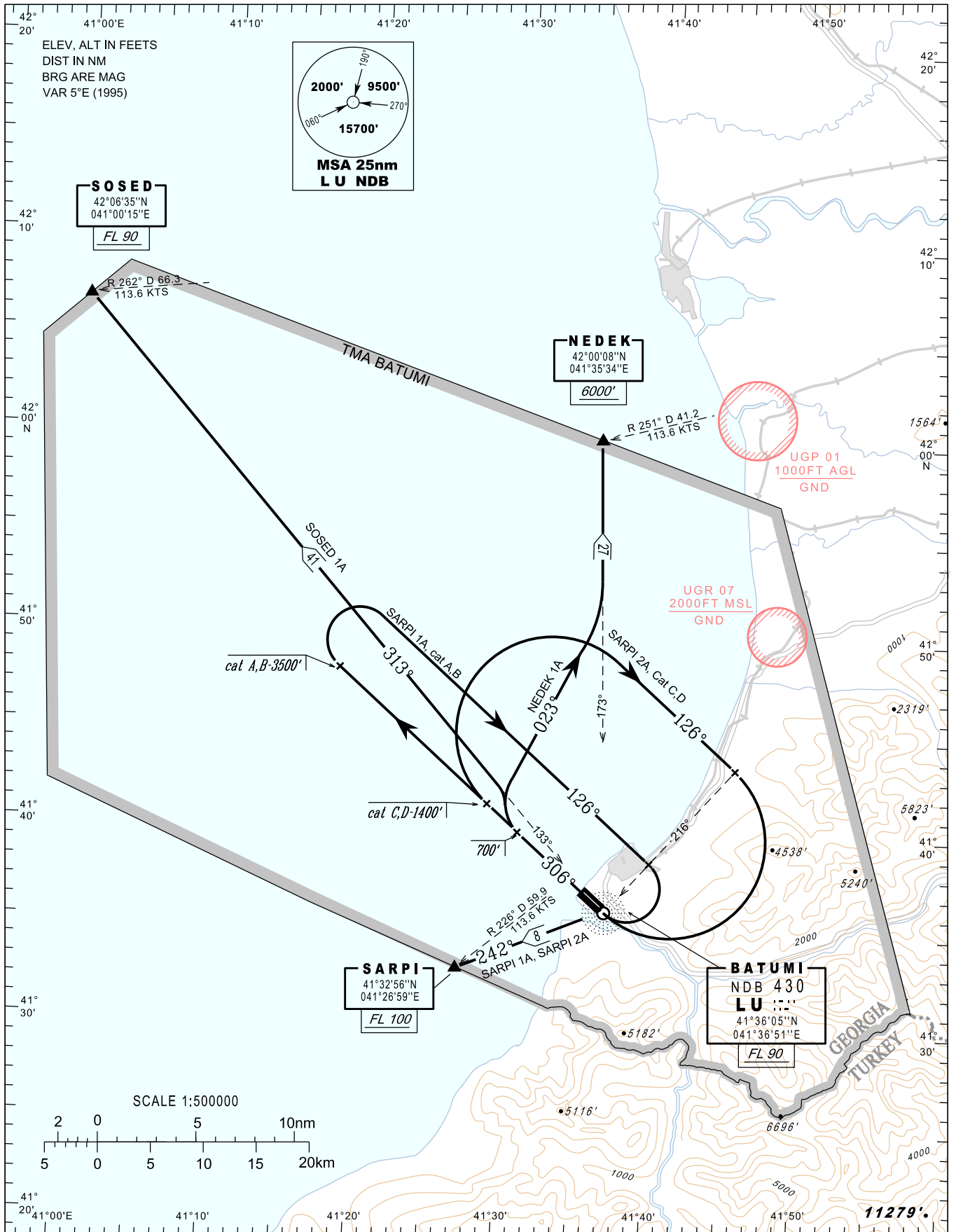
**STANDARD DEPARTURE CHART-  
INSTRUMENT (SID) - ICAO**

TRANSITION ALTITUDE  
7000'

APP 124.425  
TWR 118.600

**BATUMI (UGSB)  
RWY 31**

NEDEK 1A, SOSED 1A,  
SARPI 1A, SARPI 2A



Changes: Prohibited, restricted and training areas updated