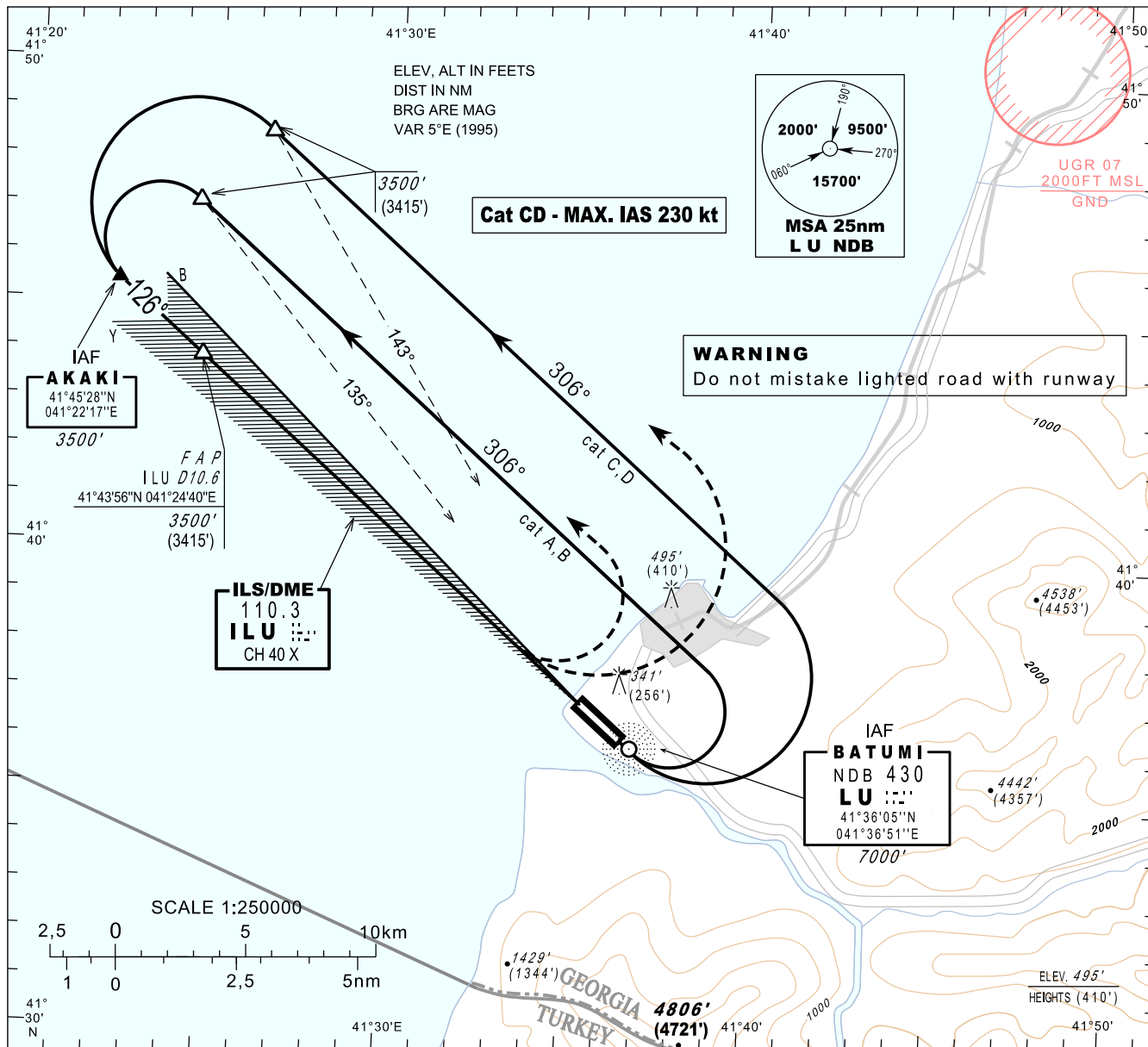


**INSTRUMENT  
APPROACH  
CHART - ICAO**

AERODROME ELEV 106'  
HEIGHTS RELATED TO  
THR RWY 13 - ELEV 85'

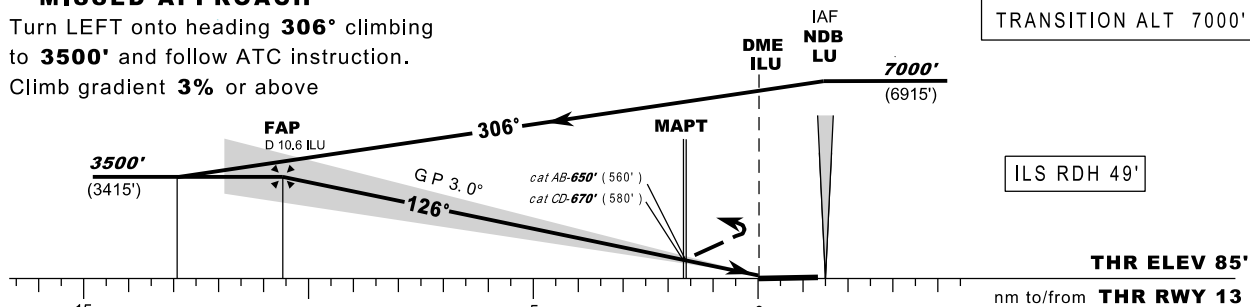
APP 124.425  
TWR 118.600

**BATUMI (UGSB)  
ILS/DME RWY 13**



**MISSED APPROACH**

Turn **LEFT** onto heading **306°** climbing to **3500'** and follow ATC instruction. Climb gradient **3%** or above



					kt										
					70	80	90	100	120	140	160	180			
		Cat A,B	FAP - MAPT	<b>9, 0nm</b>	min:s	<b>7: 42</b>	<b>6: 44</b>	<b>5: 59</b>	<b>5: 23</b>	<b>4: 29</b>	<b>3: 51</b>	<b>3: 22</b>	<b>3: 00</b>		
		Cat C,D	FAP - MAPT	<b>8, 9nm</b>	min:s	<b>7: 38</b>	<b>6: 41</b>	<b>5: 56</b>	<b>5: 21</b>	<b>4: 27</b>	<b>3: 49</b>	<b>3: 20</b>	<b>2: 58</b>		
		Rate of descent			ft/min	<b>380</b>	<b>430</b>	<b>480</b>	<b>540</b>	<b>640</b>	<b>750</b>	<b>850</b>	<b>960</b>		
Straight-in Approach		ILS	<b>650</b> (560)	<b>670</b> (580)											
DME ILU NM			10	9	8	7	6	5	4	3	2				
ALT (HGT) ft			<b>3320</b> (3235)	<b>3000</b> (2915)	<b>2690</b> (2605)	<b>2370</b> (2285)	<b>2050</b> (1965)	<b>1730</b> (1645)	<b>1410</b> (1325)	<b>1100</b> (1015)	<b>780</b> (695)				

Changes: UGR 07 added