

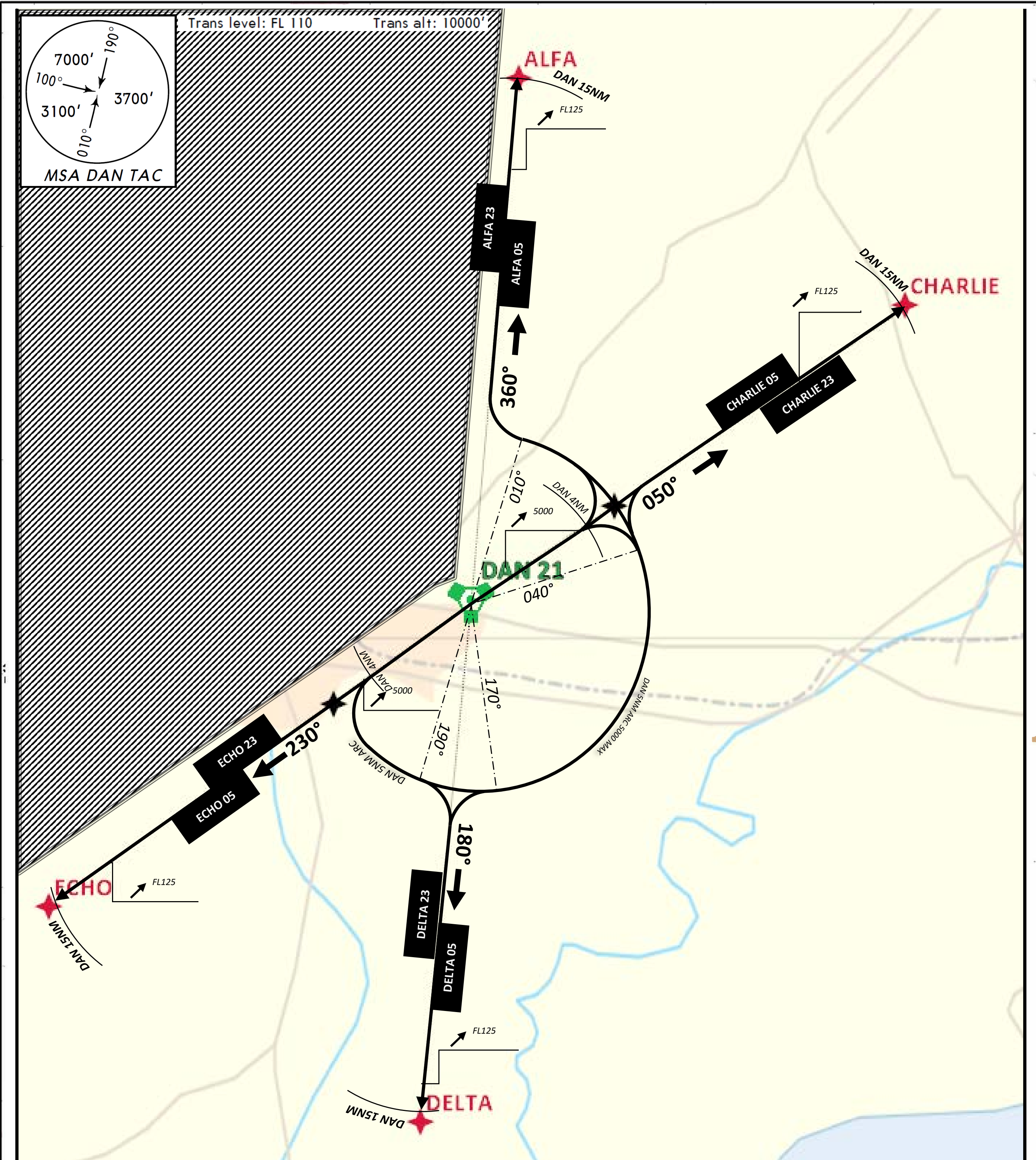
STANDARD INSTRUMENT DEPARTURE

ADANA/İNCİRLİK

RUNWAY 05 / 23

(BASED ON 36°59'50.1"N-035°23'51.2"E)

MILITARY



- ALFA 23**
- ALFA 05** Runway axis, climb and maintain 5000ft/QFE, intercept ARC DAN 5NM until outband radial then
- DELTA 23** climb FL125 or higher with ATC clearance.
- DELTA 05**

- CHARLIE 05**
- CHARLIE 23** Runway axis then follow outband radial, climb FL125 or higher with ATC clearance.
- ECHO 23**
- ECHO 05**

CHANGE: ALTITUDE CHANGED