

**Coordinates:**  
 P1 41°55.717' N 041°51.232' E Holding Position N  
 P2 41°55.665' N 041°51.249' E Holding Position C  
 P3 41°55.867' N 041°52.345' E Holding Position B  
 P4 41°56.032' N 041°52.547' E Intersection TWY N / P

**Additional Combined Frequencies:**  
 UHF 344.000 GCA Search  
 UHF 385.400 GCA Final  
 VHF 123.300 GCA  
 UHF 257.800 Tower  
 VHF 122.100 Tower

PAR	RWY 07 - 25	CAT A B C D E	MINIMA 259 - 0.8 200 (200-0.8/1.6) GS 3°	ARP 41° 55.797' N 041° 51.809' E	ELEV 59 [ft] 18 [m]	Scale 1:18'000 0 200 400 600 [m] 0 500 1000 1500 2000 [ft]
SRA	07 - 25	A B C D E	409 - 1.2 350 (350-1.2/1.6)			

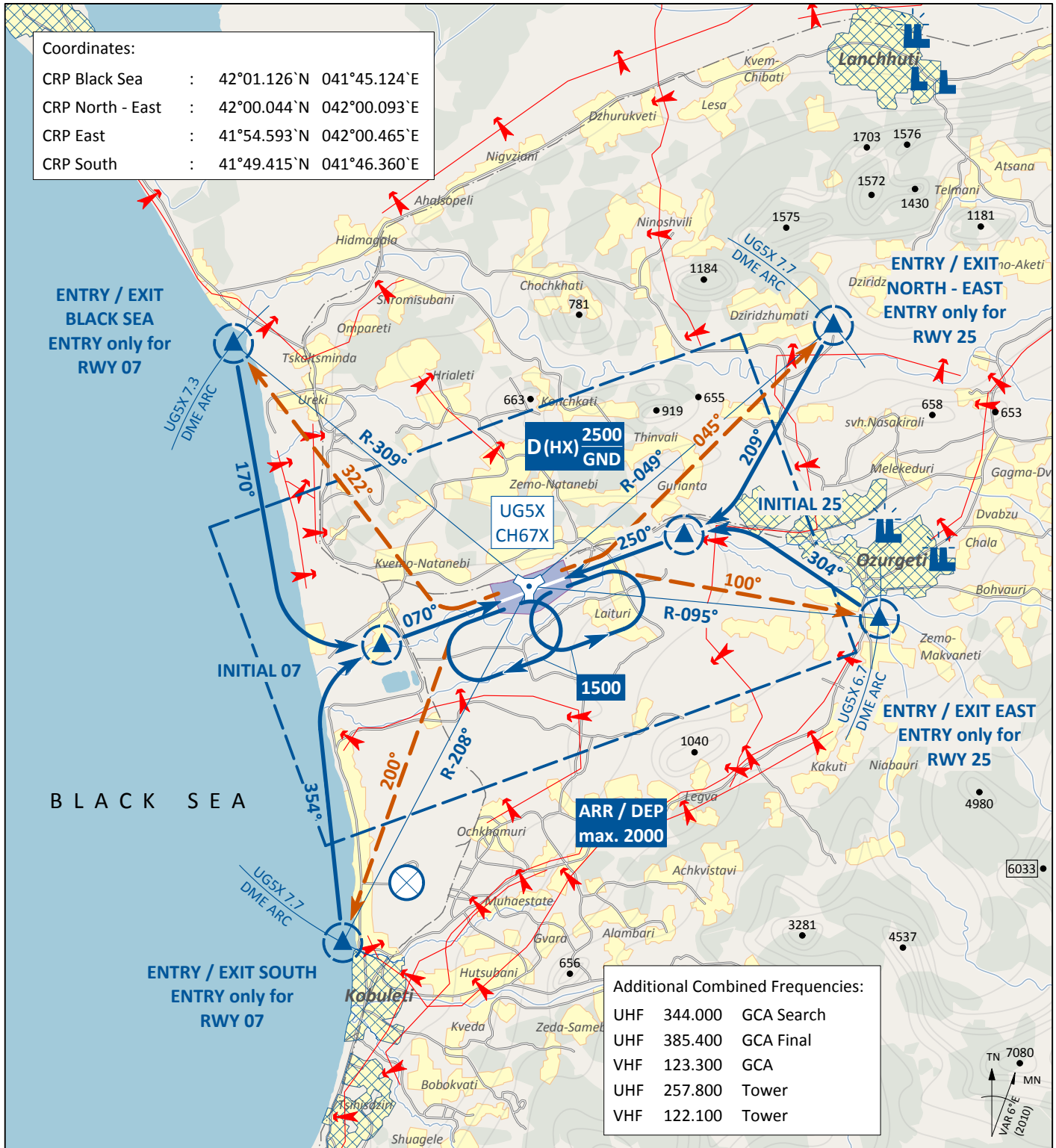
RWY	TORA	TODA	ASDA	LDA	PSN THR	ALS
07	7870 [ft] 2400 [m]	7870 [ft] 2400 [m]	7870 [ft] 2400 [m]	7870 [ft] 2400 [m]	41°55.640'N 041°50.975'E	
25	7870 [ft] 2400 [m]	7870 [ft] 2400 [m]	7870 [ft] 2400 [m]	7870 [ft] 2400 [m]	41°55.952'N 041°52.642'E	

Tower	Radar	Final - Precision	TACAN	ILS RWY 07		
133.000 MHz			67X "KBL"	111.50 MHz		



all Tracks = TN

KOBULETI (UG5X)



PSN THR	VAR	ARP	ELEV	Scale 1:200'000
RWY 07 41° 55.640` N 041° 50.975` E	6° E	41° 55.797` N	59 [ft]	0 1 2 3 4 5 6 7 [km]
RWY 25 41° 55.952` N 041° 52.642` E	(2010)	041° 51.809` E	18 [m]	0 1 2 3 [NM]

1. Landing instructions shall be requested latest 2 minutes prior to reaching ENTRY CRP
2. Avoid overflying of densely populated areas

Tower	Radar	Final - Precision	TACAN	ILS RWY 07	
133.000 MHz			67X "KBL"	111.50 MHz	

Visual Approach and Departure Chart for DCS Flaming Cliffs 3 Flight Simulator  
 rev 3.6.0 - 03.05.2013 © dp - www.10thGunfighters.de - www.ariescon.com  
 digital combat simulator

