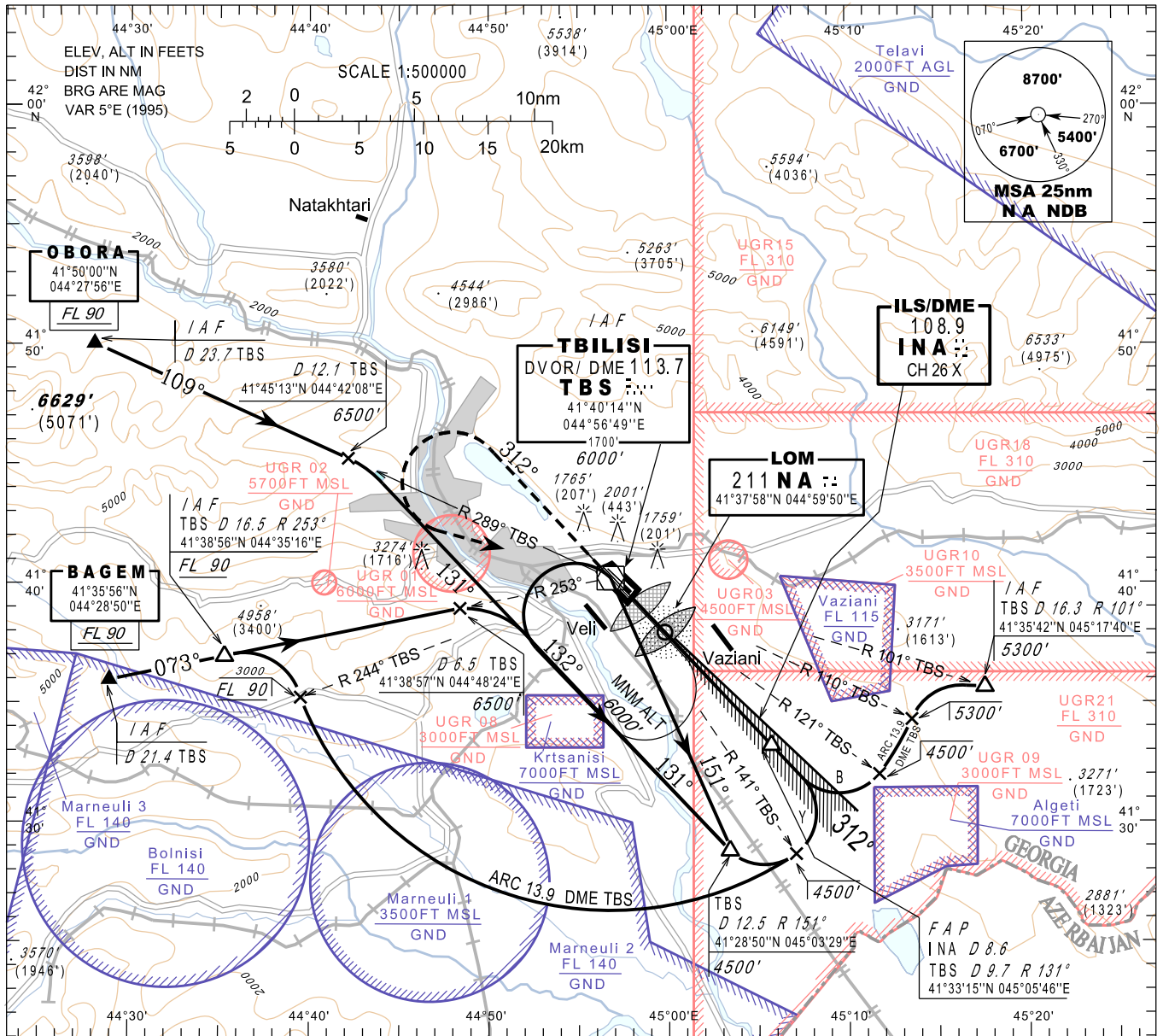


**INSTRUMENT  
APPROACH  
CHART - ICAO**

AERODROME ELEV 1624'  
HEIGHTS RELATED TO  
THR RWY 31L - ELEV 1558'

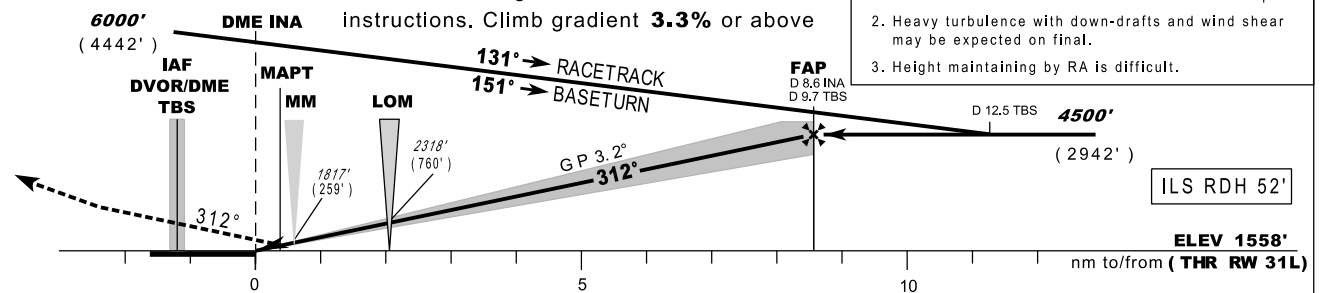
APP 134.6  
TWR 128.0

**TBILISI/Tbilisi (UGTB)  
ILS/DME or LOC  
RWY 31L**



**MISSED APPROACH**  
TRANSITION ALT 7600'  
Climb on radial **312°** to **4900'**, then turn left to **TBS**, climbing to **6000'** and follow **ATC** instructions. Climb gradient **3.3%** or above

- WARNING:**
1. Identify TBILISI/Tbilisi airport before landing in order not to mistake military Vaziani aerodrome located south-east 6 nm from ARP of TBILISI/Tbilisi airport.
  2. Heavy turbulence with down-drafts and wind shear may be expected on final.
  3. Height maintaining by RA is difficult.



OCA/ H	A B C D				kt								
	70	80	90	100	120	140	160	180					
Straight-in Approach	ILS CAT I	1728 (170)		1748 (190)		min:s							
	GP INOP	2140 (580)				7: 02 6: 09 5: 28 4: 55 4: 06 3: 31 3: 04 2: 44							
Rate of descent					ft/min								
					392 448 504 560 672 784 896 1008								
DME IVP NM					9 8 7 6 5 4 3 2 1								
ALT (HGT) ft					4631(3073) 4295(2737) 3960(2402) 3624(2066) 3288(1730) 2953(1395) 2617(1059) 2281(723) 1946(388)								

Changes: Markers symbol correction in profile view