

**STANDART DEPARTURE
CHART - INSTRUMENT
(SID) - ICAO**

TRANSITION ALTITUDE
7000'

APP 127.1
TWR 125.5

KUTAISI/Kopitnari (UGKO)

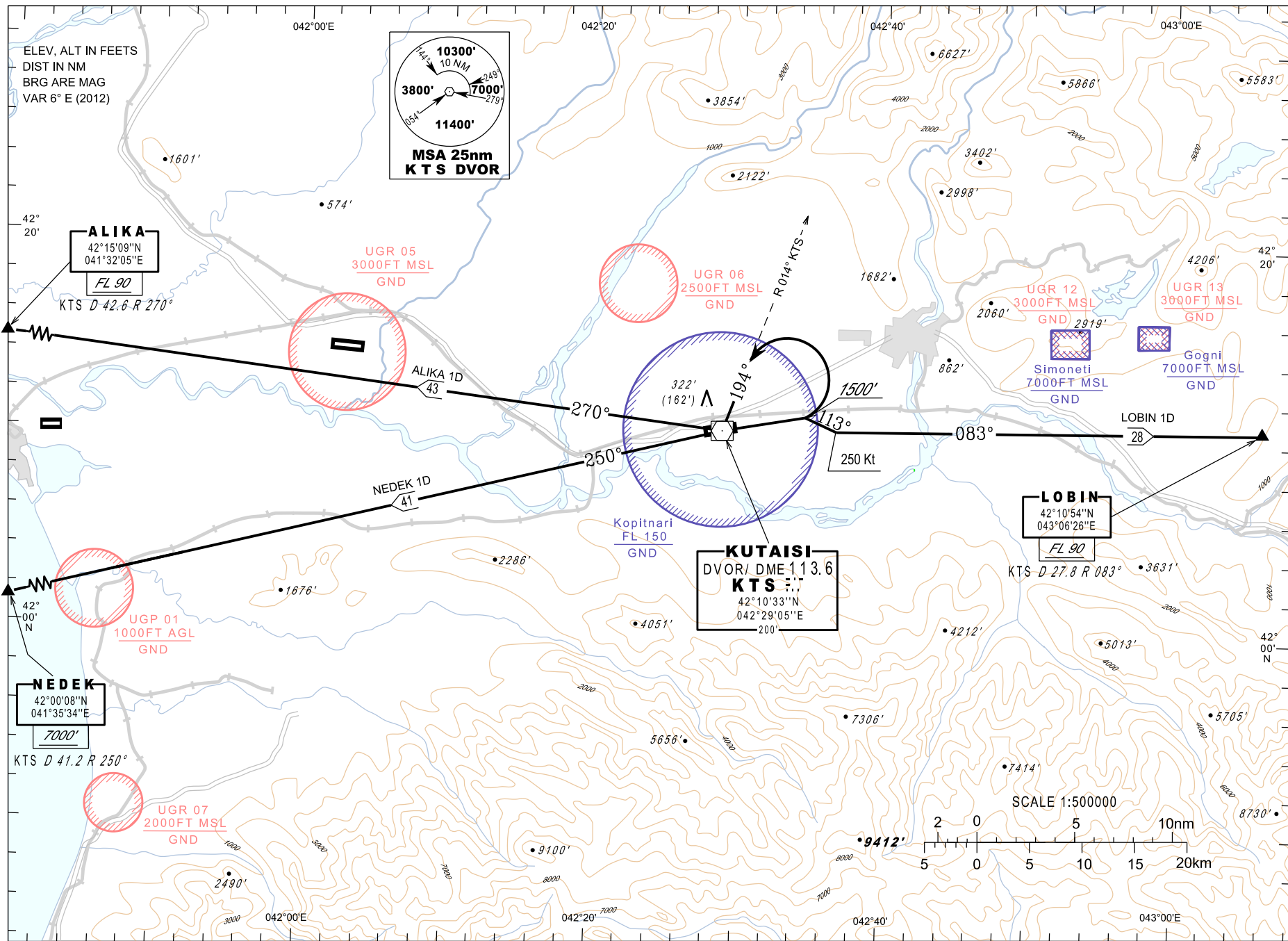
RWY 07

ALIKA 1D NEDEK 1D LOBIN 1D

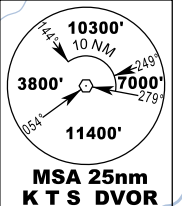
Changes: Prohibited, restricted and training areas updated

Copyright © 2017 Georgian Air Navigation - Sakaeonavigatsia Ltd

AIRAC AMDT 01/2017



ELEV. ALT IN FEET
DIST IN NM
BRG ARE MAG
VAR 6° E (2012)



ALIKA
42°15'09"N
041°32'05"E
FL 90
KTS D 42.6 R 270°

UGR 05
3000FT MSL
GND

UGR 06
2500FT MSL
GND

UGR 12
3000FT MSL
GND

UGR 13
3000FT MSL
GND

Simoneti
7000FT MSL
GND

Gogni
7000FT MSL
GND

NEDEK
42°00'08"N
041°35'34"E
7000'
KTS D 41.2 R 250°

UGR 01
1000FT AGL
GND

KUTAISI
DVOR/ DME 113.6
KTS 3.3
42°10'33"N
042°29'05"E
200'

LOBIN
42°10'54"N
043°06'26"E
FL 90
KTS D 27.8 R 083°

UGR 07
2000FT MSL
GND

