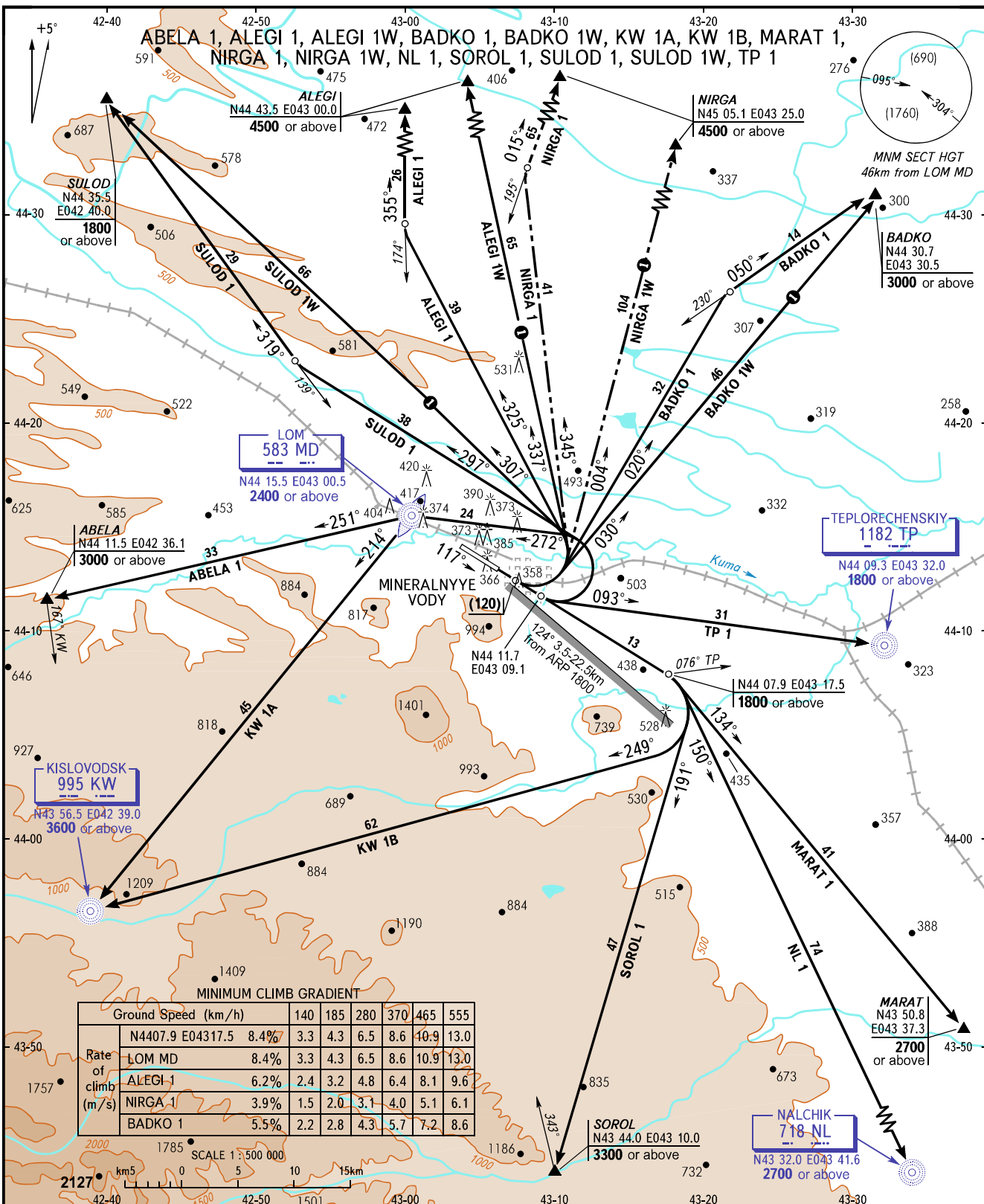


STANDARD DEPARTURE CHART  
INSTRUMENT (SID) - ICAO

TRANSITION  
HEIGHT : (900)

MINERALNYYE VODY, RUSSIA  
MINERALNYYE VODY  
RWY 12



MINERALNYYE VODY START 128.0  
 KRUG 120.7  
 APPROACH 119.3

BEARINGS AND TRACKS ARE MAGNETIC  
 ALTITUDES, HEIGHTS AND ELEVATIONS ARE IN METRES  
 DISTANCES ARE IN KILOMETRES

MINERALNYYE VODY-120.7

Routes under radar control

**WARNING:**

1. Take-off shall be carried out using noise abatement procedure for the area according to the Aeroplane Flight Manual.
2. ACFT unable to maintain the required climb gradient shall advise ATS unit about it and get other instructions.
3. After climbing to (120) immediately contact Mineralnyye Vody-Krug on 120.7.

CHANGE: Initial turn HGT