

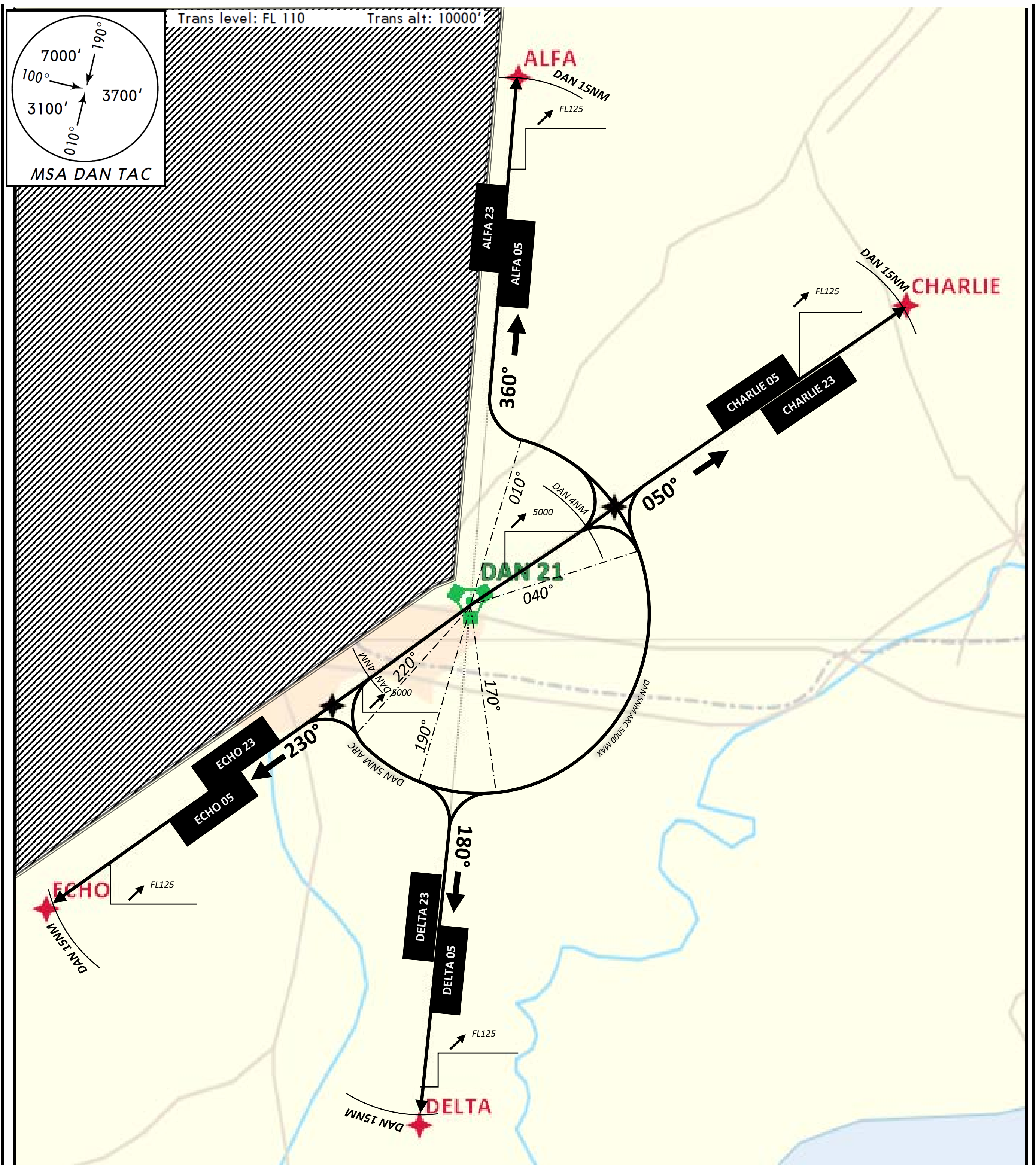
STANDARD INSTRUMENT DEPARTURE

ADANA/İNCİRLİK

RUNWAY 05 / 23

(BASED ON 36°59'50.1"N-035°23'51.2"E)

MILITARY



CHANGE: ALTITUDE CHANGED

- ALFA 23
- ALFA 05
- DELTA 23
- DELTA 05
- ECHO 23
- CHARLIE 05
- ECHO 05
- CHARLIE 23

Runway axis, climb and maintain 5000ft/QFE, intercept ARC DAN 5NM until outband radial then climb FL125 or higher with ATC clearance.

Runway axis then follow outband radial, climb FL125 or higher with ATC clearance.