

LTAG/UAB
INCIRLIK AB

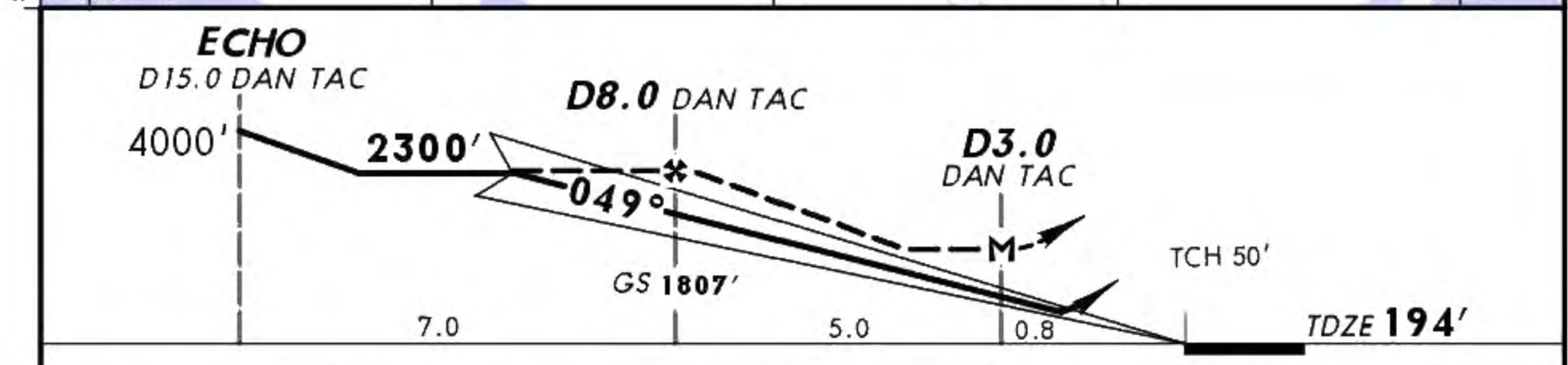
JEPPESEN

15 JUL 05 **(11-1)**

TACAN Azimuth Required

ADANA, TURKEY
ILS Rwy 05

INCIRLIK Approach (R) 126.5 128.0 134.1		INCIRLIK Tower 122.1 129.4		Ground 123.02	
LOC IDAN 109.3	Final Apch Crs 049°	GS D8.0 DAN TAC 1807' (1613')	ILS DA(H) 394' (200')	Apt Elev 238'	TDZE 194'
MISSED APCH: Climb STRAIGHT AHEAD on R-050 DAN TAC to CHRLE and hold. Maintain 5000'.					<p>MSA DAN TAC</p>
Alt Set: MB		TDZ Elev: 7 MB	Trans level: FL 110	Trans alt: 10000'	



Gnd speed-Kts	70	90	100	120	140	160		5000' ↑ on 108.4 R-050	CHRLE HOLDING	
ILS GS	2.50°	315	405	450	539	629				719
MAP at D3.0 DAN TAC										

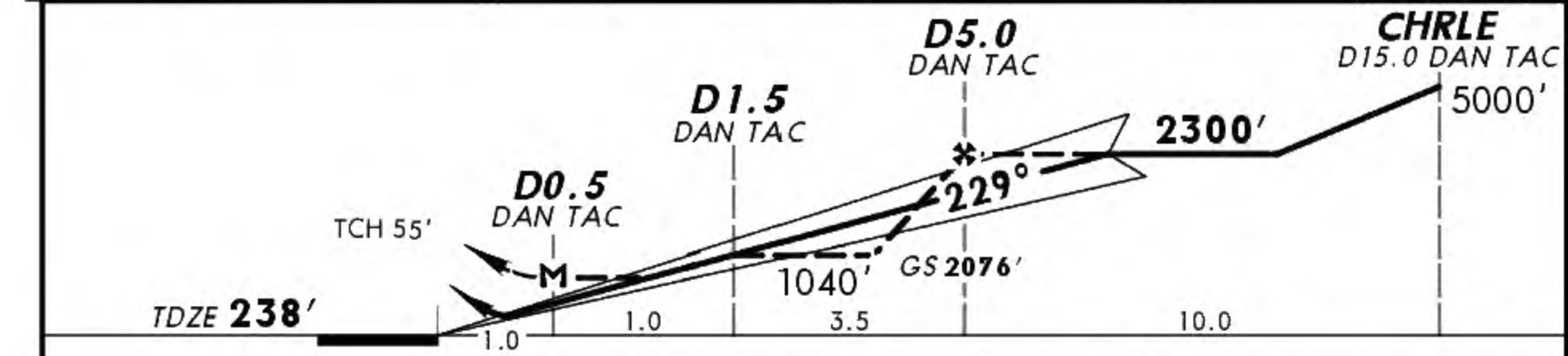
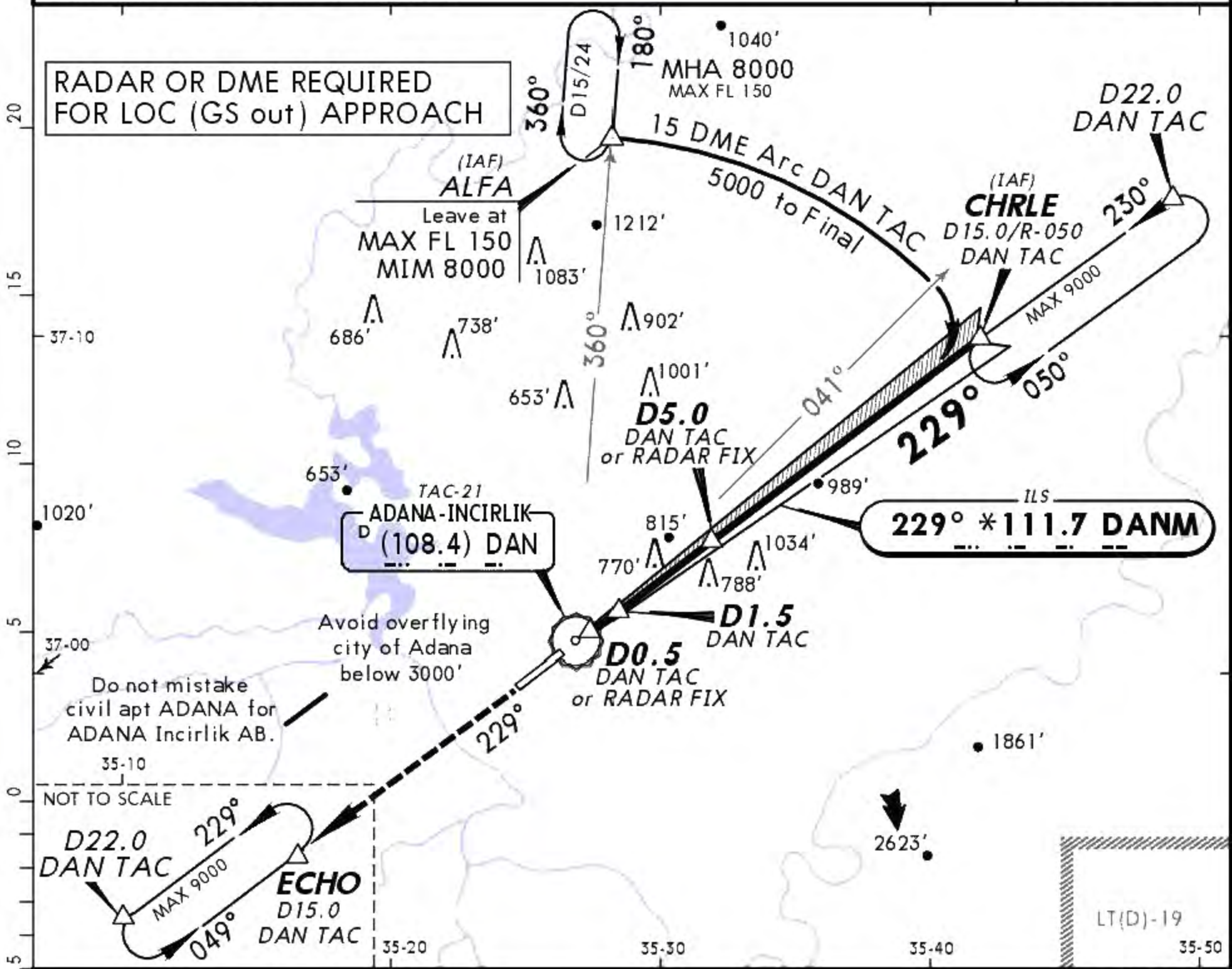
JAR-OPS		STRAIGHT-IN LANDING RWY 05		CEILING REQUIRED		CIRCLE-TO-LAND Not authorized North of rwy	
ILS DA(H) 394' (200')		LOC (GS out) MDA(H) 520' (326')					
FULL		ALS out		ALS out		Max Kts	
A				300'- 900m	300'- 1600m	90	680' (442') 500'- 1600m
B				300'- 1000m		120	740' (502') 500'- 1600m
C	200'- 800m	200'- 1200m		300'- 1200m	300'- 1800m	140	840' (602') 500'- 2400m
D				300'- 1400m	300'- 2000m	165	940' (702') 600'- 3600m

LTAG/UAB
INCIRLIK AB

JEPPESEN
15 JUL 05 (11-2)

ADANA, TURKEY
TACAN Azimuth Required ILS Rwy 23

INCIRLIK Approach (R) 126.5 128.0 134.1			INCIRLIK Tower 122.1 129.4		Ground 123.02
LOC DANM *111.7	Final Apch Crs 229°	GS D5.0 DAN TAC 2076' (1838')	ILS DA(H) 438' (200')	Apt Elev 238'	TDZE 238'
MISSED APCH: Climb STRAIGHT AHEAD on R-229 DAN TAC to 4000' to ECHO and hold.					
Alt Set: MB		TDZ Elev: 9 MB	Trans level: FL 110	Trans alt: 10000'	



Gnd speed-Kts	70	90	100	120	140	160		4000' ↑ DAN on 108.4 R-229 ECHO HOLDING
ILS GS 3.00°	377	484	538	646	753	861		
MAP at D0.5 DAN TAC								

JAR-OPS		STRAIGHT-IN LANDING RWY 23		CEILING REQUIRED		CIRCLE-TO-LAND Not authorized North of rwy	
ILS DA(H) 438' (200')		LOC (GS out) MDA(H) 700' (462')					
FULL		ALS out		ALS out		Max Kts	
A						90	720' (482') 500' - 2000m
B				500' - 1200m	500' - 2000m	120	740' (502') 500' - 2000m
C	200' - 800m	200' - 1200m				140	840' (602') 500' - 2400m
D			500' - 1600m	500' - 2400m		165	940' (702') 600' - 3600m